

(r)evolutionarchitecture

r-evolutionarchitecture.com
p. 708.582.6080 c. 312.339.1921
cfrye@r-evolutionarchitecture.com
82. S. la grange road | suite 206
la grange, illinois 60525

OUR CLIENTS' WORDS AND TRUST

Our clients tell us the quality of our work, our ability to stay on budget and our collaboration with their teams are the top reasons they use our design services. Following are their words:

Working with (r)ev o lu t io n architecture has been a real pleasure for our Library Building Committee and City Leaders over the past several years. Through strategic and creative planning, Chris and his team helped turn a 40 year old dream to construct a new library for the City of Viroqua into a reality. Working with the general public, elected officials, our Library Board and Construction Committees took great patience, vision, and professionalism. We are proud to say, (r)ev o lu t io n architecture has designed a library facility for our community that is sustainable, state of the art, and a model for other communities.

Trina Erickson
Library Director
McIntosh Memorial Library

It has been the Foundation's pleasure to partner with (r) evolution architecture firm to build a healthier and stronger region. I have witnessed first-hand their work at NAMI Metro Suburban Living Room and Wellness Center. Chris Frye and his talented team were incredibly responsive and collaborative in designing a specifically well suited space that is inviting, efficient and is now an asset in our local community. The firm is passionate about great design and accessible healthcare space.

Greg DiDomenico, CEO
Community Memorial Foundation
National Alliance for Mental Illness Metro-Suburban of La Grange

I have had the pleasure of knowing and working with Chris for over 20 years. During that time our relationship has evolved from employee/ employer to partner to eventually where I am the client and Chris's firm is a design consultant. His skills have led to multiple design awards but more importantly to a history of satisfied clients. He is successful at listening and responding to clients' needs while collaborating with diverse stakeholder groups, inclusive of sub-consultants in order to achieve a unified solution.

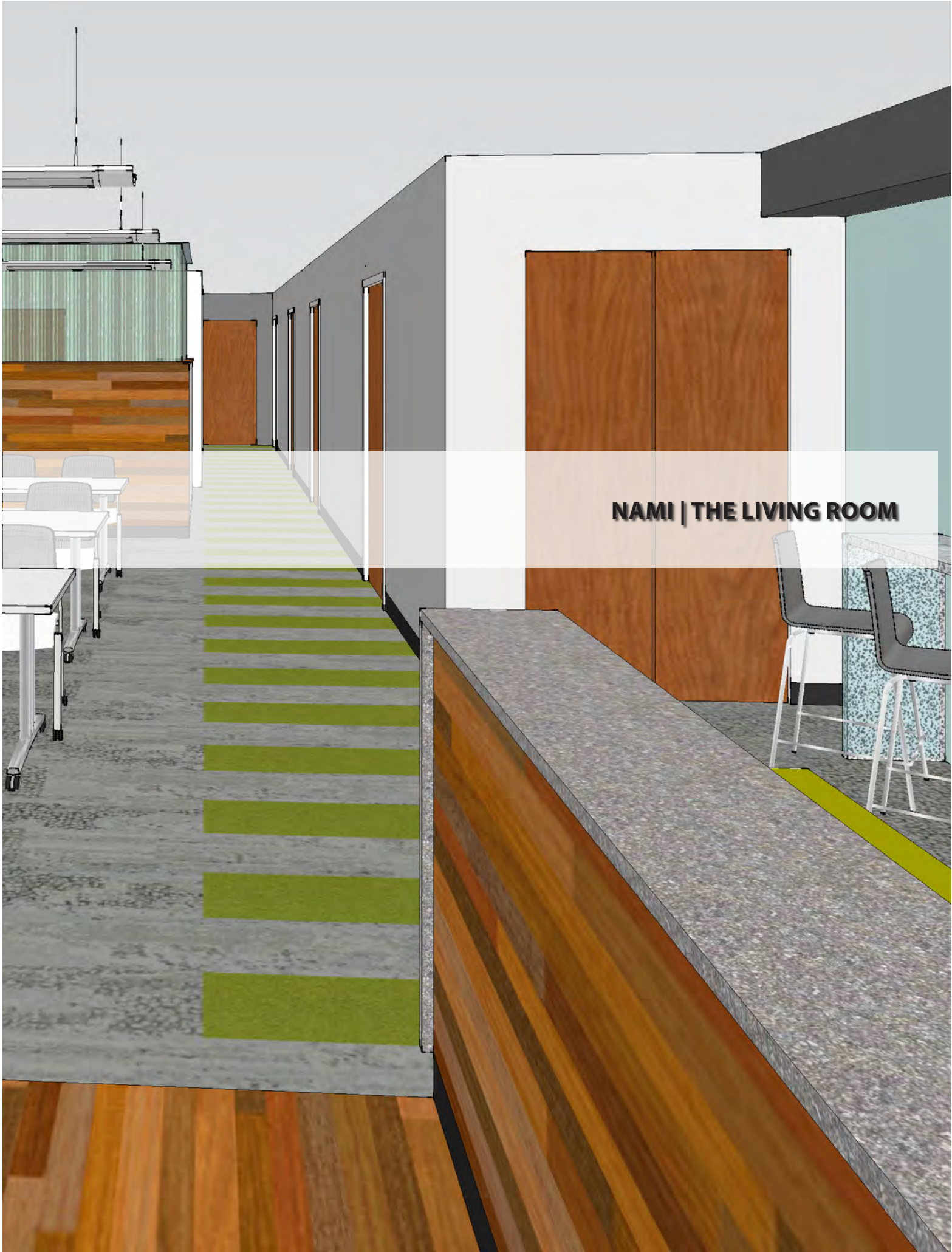
Tom Seymour, AIA
Executive Vice President
Mayo Clinic/DAHLC and Dewberry

McIntosh Memorial Library
Trina Erickson
Library Director
McIntosh Memorial Library
Viroqua, Wisconsin
t.erickson@wrlsweb.org
p. 608.637.7151

**National Alliance for Mental Illness,
Metro-Suburban of La Grange**
Greg DiDomenico
President and CEO
Community Memorial Foundation
15 Spinning Wheel Road | Suite 326
Hinsdale, IL
gdidomenico@cmfdn.org
p. 630.654.4729

Mayo Clinic / DAHLC
Tom Seymour
Executive Vice President
Dewberry Architects
Peoria, Illinois
tseymour@dewberry.com
p. 309.282.8198

*Associate Architect, Mayo
Clinic + Bradley University



NAMI | THE LIVING ROOM

SIZE
3,000SF
COST
WITHHELD PER
OWNER'S REQUEST

COMPLETED
SEPTEMBER, 2016

CLIENT CONTACT
Greg DiDomenico
President and CEO
Community Memorial
Foundation
15 Spinning Wheel Road
Suite 326
Hinsdale, IL 60521
gdidomenico@cmfdn.org
630.654.4729



NAMI | THE LIVING ROOM La Grange, Illinois

KEY PERSONNEL
Christopher Frye, AIA
Gioia Giannotti

SERVICES
Programming
Architecture
Interior Design
Construction Administration

RELEVANCE
Renovation of an existing office building for a program that delivers amenities for people with mental health needs

Fast track construction schedule to ensure operations in conjunction with local agencies

Assisted with procurement of materials, lighting and furniture.

Construction Manger Delivery

(R)EVOLUTION ARCHITECTURE IS PROUD TO BE A PART OF THE REALIZATION OF THE WELLNESS CENTER AND LIVING ROOM IN LA GRANGE

Belief in NAMI's mission to improve mental health wellness and minimize its stigma led to (r)evolution architecture's dedication to and design of its new La Grange, IL Center.

The Community Wellness Center and Living Room is NAMI Metro-Suburban's newest location at 4731 Willow Springs Road in La Grange. The Community Wellness Center is open to anyone seeking an inviting place to learn about mental health and gain necessary tools to strengthen overall wellness. The Living Room is a place for adults 18 and over who are experiencing an increase in mental health symptoms to seek help and comfort. The Living room is a nationally recognized model and a proven alternative to hospital emergency rooms.

"We know that one in five people has a diagnosable mental health condition. Stigma is the biggest barrier to educating or

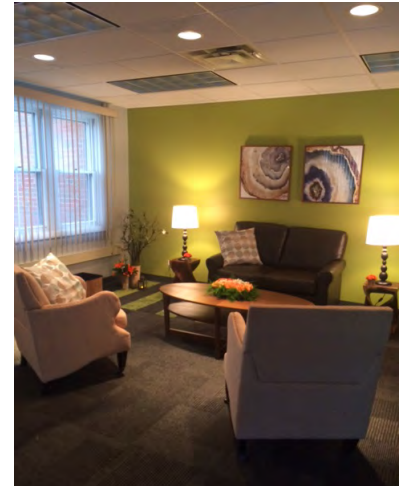
treating mental health conditions. Working with (r)evolution architecture in creating a non-clinical setting was paramount to the Center's strategy. The result was a warm, safe and inviting space for our community to gain the tools and support necessary to live a healthy life." Kimberly Knake, Executive Director, NAMI Metro-Suburban.

The user experience of both visitors and staff, in addition to the Center's mission were key drivers of the interior design direction. The design and material selection centered on bringing to life a space that felt welcoming, comfortable and engaging. (r)a leveraged various sustainable design strategies to enhance the space with the use of natural materials, such as: the inclusion of a living wall in the lounge area, wood panels to improve the warmth of the space, and glass to improve daylight in the interior hallways. In partnership with Interface Flooring, a unique carpet tile pattern was leveraged to guide the visitor throughout the space, and into the cozy "Living Room" which is enriched by a wood panel wall.

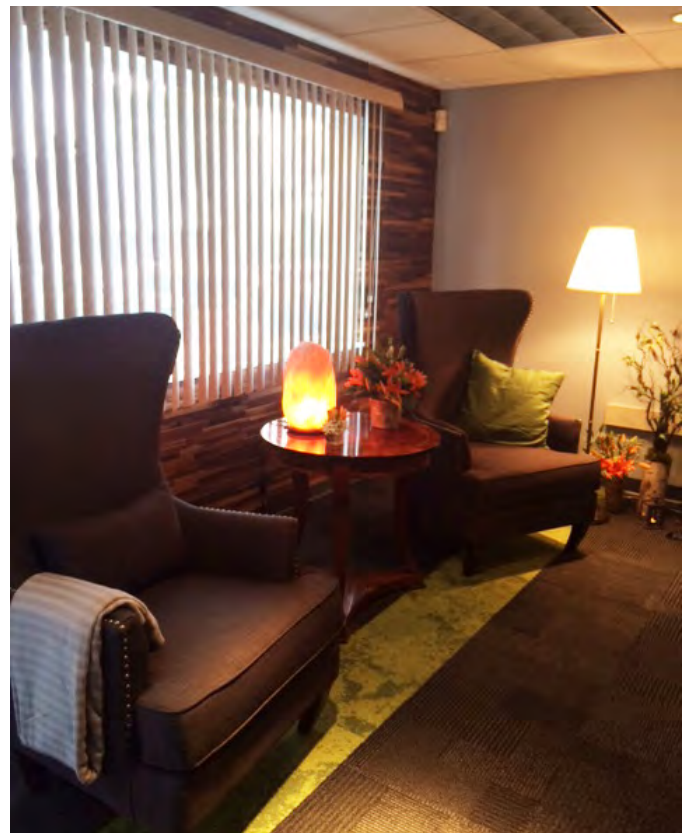
NAMI | THE LIVING ROOM



View of Group Education Room ▲



Waiting area at Lobby ▲



Seating area in the Living Room ▲

It has been the Foundation's pleasure to partner with r) evolution architecture firm to build a healthier and stronger region. I have witnessed first-hand their work at NAMI Metro Suburban Living Room and Wellness Center. Chris Frye and his talented team were incredibly responsive and collaborative in designing a specifically well suited space that is inviting, efficient and is now an asset in our local community. The firm is passionate about great design and accessible healthcare space. This firm understood our vision and worked in partnership with NAMI West Suburban, the Village of La Grange and other contractors to execute a successful finished product.

**Greg DiDomenico | President and CEO
Community Memorial Foundation**



MCINTOSH MEMORIAL PUBLIC LIBRARY

SIZE

13,750 SF

COST

\$3,200,000 - LIBRARY

\$5,000,000 - WTC

COMPLETED

MAY, 2016

CLIENT CONTACT

Trina Erickson

Library Director

McIntosh Memorial Library

Viroqua, Wisconsin

t.erickson@wrlsweb.org

p. 608.637.7151



MCINTOSH MEMORIAL LIBRARY | WESTERN TECHNICAL COLLEGE
Viroqua, Wisconsin

KEY PERSONNEL

Christopher Frye, AIA

SERVICES

- Master Planning
- Programming
- Architecture
- Interior Design

RELEVANCE

Full visioning for new facility with an addition and renovation of an existing building

Phased construction while maintaining operations throughout

Extensive community outreach

Assisted in procuring state grant for construction/ffe

Construction Manger Delivery

The city of Viroqua seeks to expand its existing public library services while extending its access to additional programs and services. As a result, and in light of generous community funding, a new and significantly larger public library is envisioned to be erected at a new location, which will now physically connect the Library to the Western Technical College (WTC). The intent is for this new Library to focus on bridging public access to additional social amenities and educational venues flexible enough to accommodate the town's long-term needs.

The richness of the region, along with the various programmatic needs for the facility has influenced our solution. This region is known as the Driftless or lack of glacial drift area. It's a region characterized by an eroded plateau with bedrock overlain by varying thicknesses of loess. This region has elevations ranging from 603 to 1,719 feet with diagonal and deeply dissected river valleys. As it relates to the programmatic needs, the building needed to include all public library program elements, as well as a senior/community center, a public information center and a public commons lounge. Our conceptual position is an exercise in the expansion of a library's meaning and an exploration of the reinterpretation and enhanced ideology of what defines a public library, as well as its image within the civic realm of Viroqua.

The investigation for this solution is centered on three concepts: the integration

of formal programmatic relations within the library proper; the interaction and interrelation of varying programmatic needs; and its materiality and massing as used to define the building's reference to the surrounding context in and around Viroqua, as well as the Driftless region. It is through the initial investigation that we began to formulate the defining principals.

The plan is simultaneously being conceived as the massing. Initially, the plan organized the Library as a larger volume, mimicking the WTC massing with cuts along its edge to allow courtyards and natural light to enter the spaces along its western edge. Between WTC and the library a connecting link is formed by one of the voids, giving the Library and the College a common social space to enter through from Rock Street and Main Street. As the planning diagram developed further the broader strategy of the massing began to take shape. We fused a continuous bent roof plane; giving direct reference to the hills and valleys of the surrounding topography was laid over the massing bending and folding in height to relate to the interior program needs.

As the plane extends to the south, further engagement of the WTC building was developed to give the overall assembly of buildings more continuity and presence for Viroqua. It is intended to further exploit the overlapping of forms and functions, creating new opportunities programmatically, as well as visually.

VIROQUA PUBLIC LIBRARY



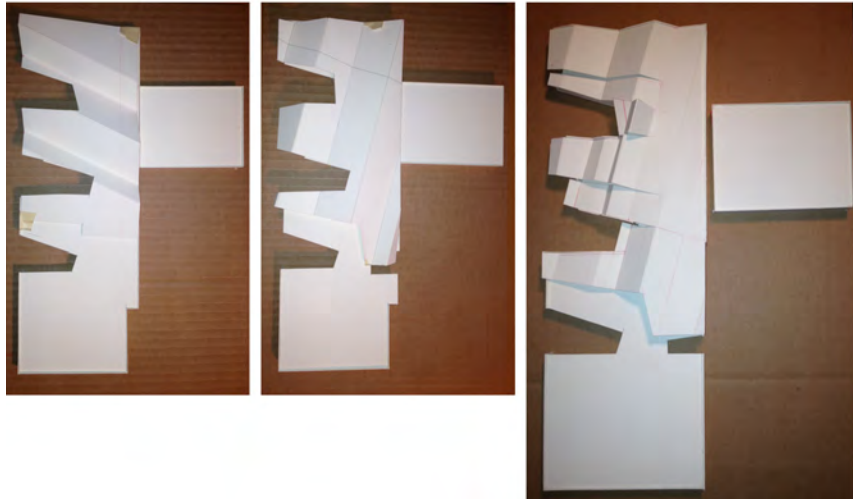
View of courtyard along Rock Street with fireplace and children's area in view ▲



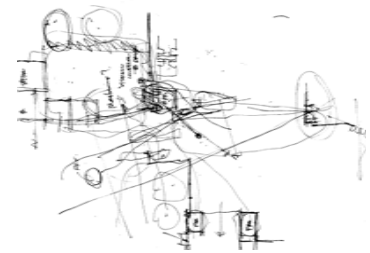
View of along Rock Street with Western Technical College in foreground.

Working with (r)ev o lu t i o n architecture has been a real pleasure for our Library Building Committee and City Leaders over the past several years. Through strategic and creative planning, Chris and his team helped turn a 40 year old dream to construct a new library for the City of Viroqua into a reality. Working with the general public, elected officials, our Library Board and Construction Committees took great patience, vision, and professionalism. We are proud to say, (r)ev o lu t i o n architecture has designed a library facility for our community that is sustainable, state of the art, and a model for other communities.

Trina Erickson
Library Director
McIntosh Memorial Library



The buildings' massing, generated from the existing edges of the surrounding structures, occupies the northwest corner of the block. We then pushed areas of mass in to the east, creating a rhythm of courtyards along the western edge, breaking the scale to more in line with the Main Street streetscape, but also to allow for exterior social spaces and green areas in and around the library and WTC. Along the eastern face of the building, a simplified read was necessary to be in harmony with the long façade of WTC as well and the Dahl building directly in front of the Library. A rust-colored material is being considered for the Library to be contextual with the older brick buildings of Main Street. Large expanses of glass will be used throughout the facility to give the library maximum transparency into and out of the various reading areas and exterior courtyards.



The building organized on one level. The departmental areas include unique spaces for children, adult collection areas, circulation and checkout, administrative offices, workrooms, and friends of the library functions. The spacious facility also includes open lounge seating, and the necessary mechanical –designated areas. In an effort to provide safe and convenient access to a large community/senior center for the public, the WTC has designated a street level access location within their facility. The large community/senior center is located a space that is accessible from the street, in order to give a separate public access throughout the main collection areas, with the community room overlooking the main entry at Rock street as well as into the library. The section is further enhanced with folding and bending of the roof form, allowing indirect clerestory light to enter the center of the library.

It is our intention for this solution to evolve the notion of the Library and provide the Viroqua area, a facility that not only responds to the needs of the community, but goes beyond expectations and delivers an enhanced experience for years to come. We believe this solution provides an alternative and an expanded vocabulary to the prevailing ideology of what a library is and/or what a civic building can be well into the future.



ILLINOIS CENTRAL COLLEGE - COUGARPLEX

SIZE

ADDITION - 54,000 SF

RENOVATION - 9,000 SF

CONSTRUCTION VALUE

\$15,400,000

COMPLETED

February, 2012

CLIENT CONTACT

Troy Hatterman

Director of Facilities
Planning and Design
Illinois Central College
1 College Drive
East Peoria, Illinois 61635

p. 309-694-5156

e. troy.hattermann@icc.edu

*completed with previous firm



ILLINOIS CENTRAL COLLEGE | COUGARPLEX East Peoria, Illinois

LEED SILVER

KEY PERSONNEL

Christopher Frye, AIA

SERVICES

Master Planning
Programming
Architecture
Interior Design

AWARDS

American Institute of Architects,
Central Illinois,
Award of Merit, 2012

American School & University
Magazine,
Sports Stadiums/Athletic
Facilities Citation, 2012

Association of Licensed
Architects, Silver Award, 2011

RELEVANCE

Multi-court gym
Fitness Equipment Areas
Suspended running track
Multi-purpose, group exercise
studios, lockers, childcare

The Illinois Central College (ICC) embarked on a path that few community colleges pursue. ICC defined a goal for itself in that as the campus strives to provide more amenities to the growing population of on-campus students, the new CougarPlex Athletic and Recreation Center will become the center piece for the improvement to student life. The design of the new center provides a 54,000 SF new addition and 9,000 SF of remodeling to the existing gymnasium building. The 3-court gymnasium anchors the northeastern edge of the site, sitting adjacent to the existing brick gymnasium. The newly designed program areas include a new lobby/entry, café, group exercise rooms, student locker rooms, exercise equipment area, jogging track as well as administration and athletics support areas. In addition, the renovation included the addition of locker rooms for visiting teams and coaches for both men's and women's athletics.

The connections to the competition court became the driving idea behind the interiors of the facility. After entering and passing the main desk, visitors are directed thru the new addition into a link that has been designed as the Hall of Fame for ICC Athletics. Trophies and

memorabilia are proudly displayed for all to see. An additional interior element is the use of ICC blue, which becomes the hallmark feature of the facility including the use of a backlit resin panel that extends from the vestibule to the reception desk. This panel is incorporated and becomes a key feature of the trophy case.

The exterior design challenge was to bring to life a dynamic student fitness center which was to connect to an existing performance court building built in the 1970s. The strategy pursued was the removal a portion of the existing facility which would then be used as the buffer between the existing structure and the new facility. An additional entrance was created within this new space to enable students and spectators attending athletic events to move through the center, between the old and new structures, further reinforcing the synergies between the two. The integration of these two structures resulted in an additional benefit which was the creation of an inner courtyard. The courtyard is planned to be heavily planted with native vegetation by the university's horticulture students in the coming year. It is also intended to be available for outdoor classes while maintaining the potential for a Zen garden.

ILLINOIS CENTRAL COLLEGE - COUGARPLEX



Open main stair that leads to exercise areas, with group exercise studios beyond. ▲



Juice bar at lobby, merged with the main desk to reduce staffing and operational costs. ▲



Renovated corridor leading from the existing facility toward the new addition and main entry beyond. ▲



View of new addition and existing facility from student parking area. ▲



first floor plan

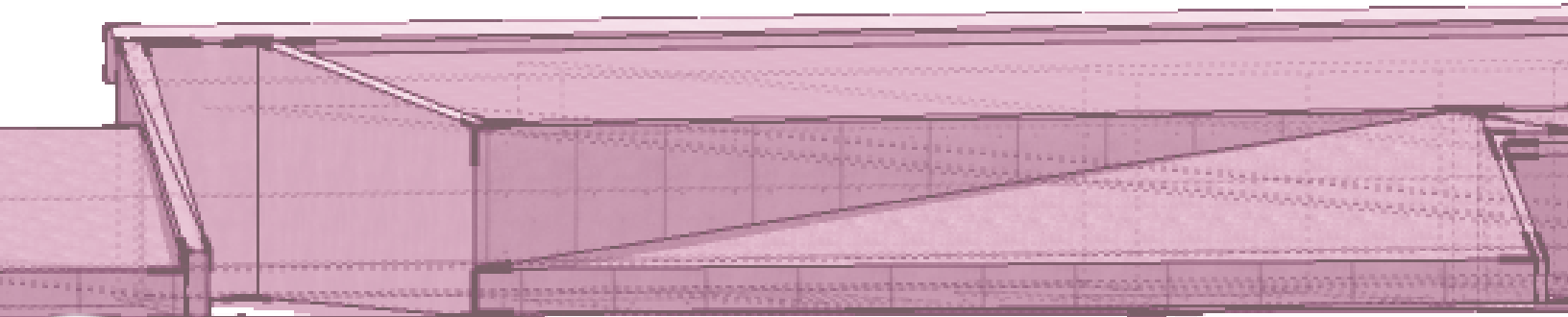
“The green roof, fitness floor, and track incorporate space limitations well...great inner courtyard space...skillful integration of old and new.”

Given the compact site and inability to remove any adjacent parking, the new addition takes on the geometry of its context, bending and wrapping through the site to maximize the program, as well as imbed itself with its user’s path.

Sustainability was at the forefront of the design, and therefore an extensive green roof was utilized on the bent bar of the structure while all existing systems were upgraded to include more energy efficient units. Additionally, the existing athletic arena was re-cladded and fully

insulated to ensure it met standards for energy efficiencies and performance.

Additionally, external field improvements were also made. Renovations to the baseball and softball fields included new bleachers and press boxes. A new soccer field was created east of the existing gymnasium. The project also included master planning for the future addition of an aquatics facility and an indoor baseball practice facility.



(r)evolutionarchitecture

r-evolutionarchitecture.com

p. 708.582.6080 c. 312.339.1921

cfrye@r-evolutionarchitecture.com

82. S. la grange road | suite 206

la grange, illinois 60525