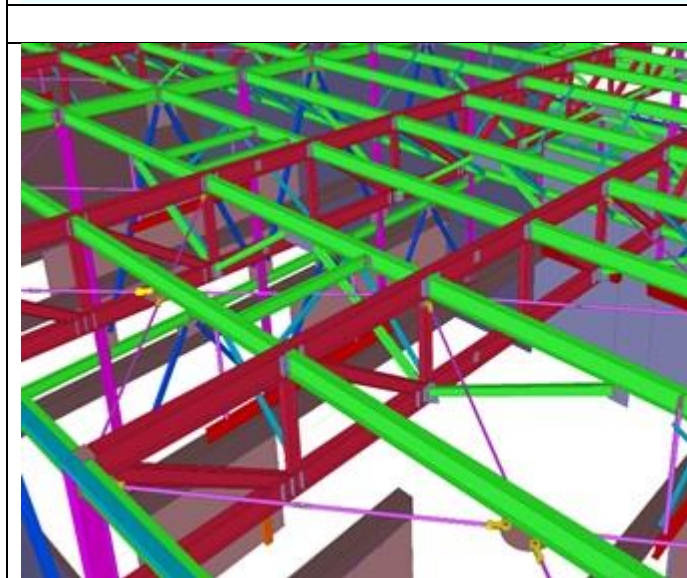
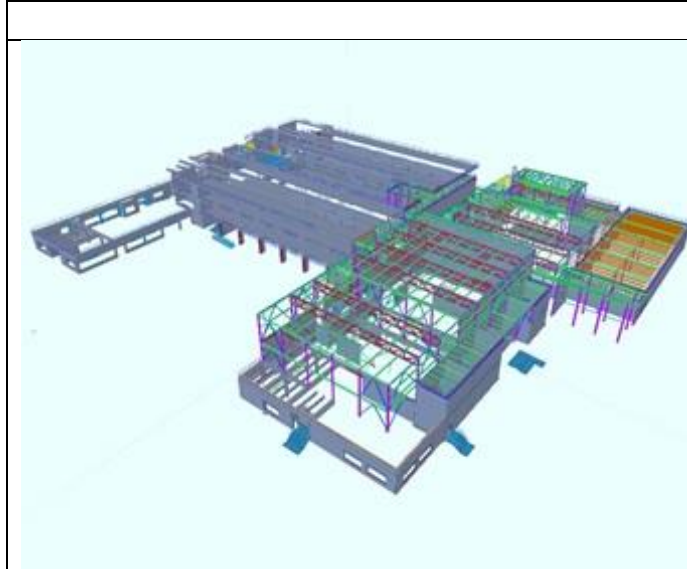


Case Study for Steel Detailing Project

New McDonough High School

Project information	Building Type	High School
	Location	New Orleans, Louisiana, USA
	Billable hours	2000 hours
	Inputs	Structural & Architectural Design drawings
	Deliverables	Steel Erection & Shop drawings
	Services	Structural & Misc. Steel detailing
	Software	Tekla Structures



Business model adopted

Our scope of services

The high school project involved structures that comprised of heavy sloped truss members, auditorium, catwalk structure, gymnasium, class rooms, parking garage and eight stair towers.

The scope of work required Advenser to create 3D structural steel model including all main, embed and miscellaneous steel elements using Tekla Structures; to extract all drawings and reports to facilitate the construction of steel structure.

Advenser created models and drawings as per AISC, AWS & OSHA standards based on structural and architectural design drawings. The project deliverables included erection drawings, Fabrication drawings and single part drawings. Advenser also generated reports – ABM, B.O.M, NC file, KISS file, Bolt list, Stud list & dxf.

