



**The future is now!**

**brought to you by Tri-Corp Decking, Siding, and Fencing**



**iDecking Revolution** is brought to you by an Italian company established to innovate in the field of outdoor decking and wall claddings. Our team has carried out years of research and development with some of the world's most important architects, designers and qualified deck builders. This research has given us the opportunity to alleviate all the main issues and problems associated with traditional deck building techniques and materials, starting a true revolution in the decking field.

**iDecking**  
REVOLUTION

## Innovations@ DOMOTEX

THE WORLD OF FLOORING  
HANNOVER - GERMANY

### Winner of the International prize for best innovations



SELECTED INNOVATIONS  
2015, 2016 & 2017



A jury of ten experts from the fields of design, architecture, interior design, the media and the property market assess the products in the respective categories according to specific criteria, including their relevance for the various target groups, technological innovation, design concept and quality.



GERMAN  
DESIGN  
AWARD  
2017

## German Design Award 2017



The German Design Award directly contributes to the overall commercial success. Prizes will only be awarded to projects that truly represent pioneering contributions to the German and international design landscape. The highly esteemed, international jury guarantees this. The German Design Award identifies and presents unique design trends: a competition that advances the design-oriented scene.



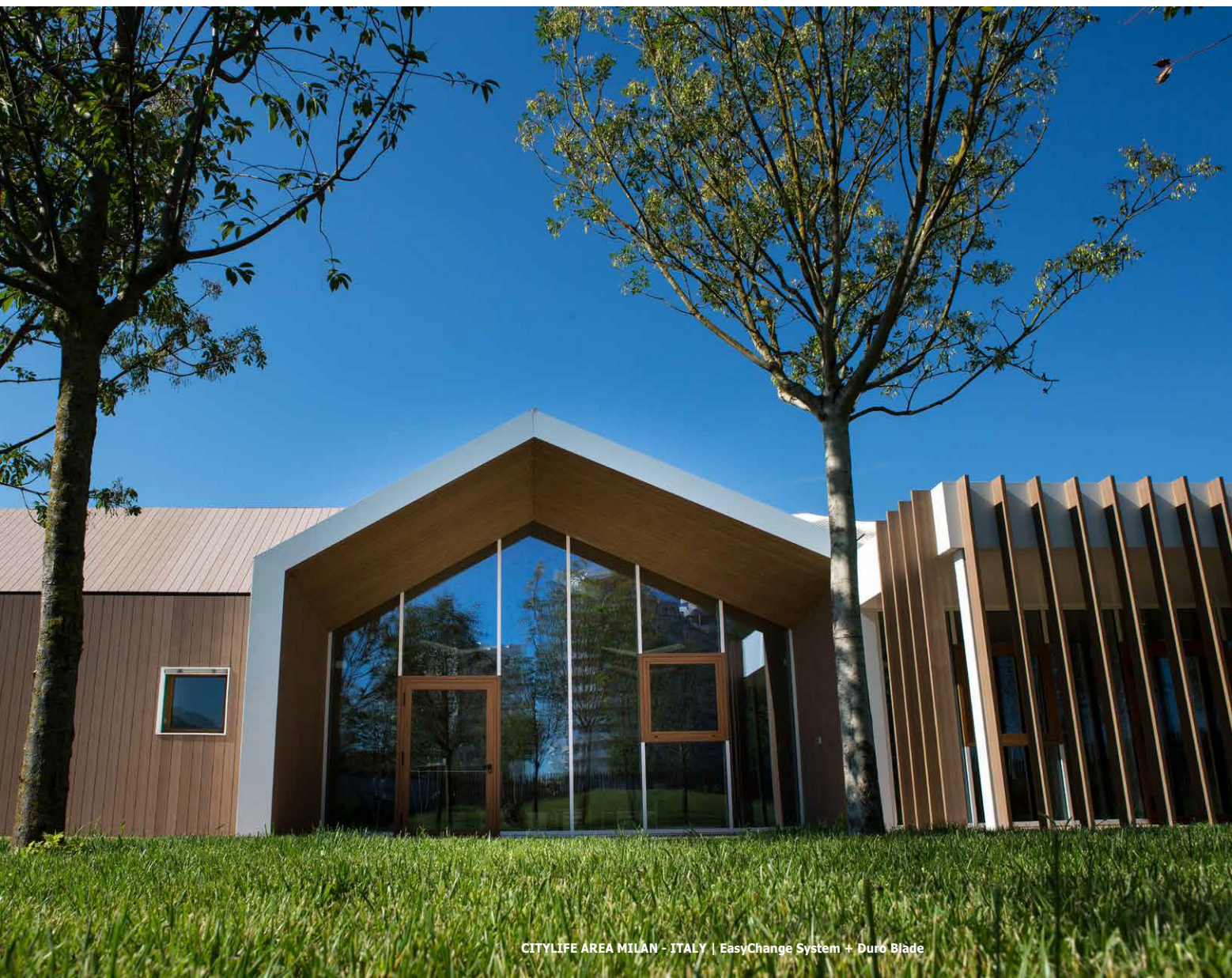
PRIVATE VILLA | Cladding 140 + Duro Natural

CLADDING

/

FENCING





CITYLIFE AREA MILAN - ITALY | EasyChange System + Duro Blade





## iDecking Cladding finished by Tri-Corp

iDecking Cladding and Fencing partnered with AST TruStain gives you the look of real wood with the performance of a composite!

Benefits of AST Tru Stain applied to iDecking:  
*TruStain is a single component - the molecular bond eliminates the potential for inter layer failures common with stain/clear coat systems*

*Heat Reflective - lower temperatures and less fade (delta E of less than 1 after 3,000 hours accelerated weathering with Xenon Arc - ASTM G155 )*

*High flexibility resin results in excellent wear and impact resistance - TruGrain can be cut after finishing Meets AAMA 615-13 test standard*

*Environmental performance is market leading - 20 g/litre VOC, lead , chromate, isocyanate and NMP FREE*

*Wear Tested (ASTM D4060-14, Standard Test Methods for Abrasion Resistance of Organic Coatings by the Taber Abraser )*

### 15 year warranty on siding!



# Stock Colors

1050 PALE GOLDEN FVG C-02	1051 BURMA FVG C-08	1052 DARK BURMA FVG C-09	1053 SIAM FVG C-14
1054 DARK SIAM FVG C-15	1055 AGED TEAK FVG C-23	1056 JAVA FVG C-24	1059 DARK TAUPE FVG C-29
1060 CAPE COD FVG C-42	1065 WALNUT FVG C-51	1067 DARK GREY FVG C-53	1068 MAHOGANY FVG C-64
1069 PALISANDER FVG C-71	1071 CONCRETE GRAY FVG C-77	1072 BRIGHT RED FVG C-3001	1077 ANTHRACITE GREY FVG C-7016
	1078 BLACK FVG C-9005	1079 WHITE FVG C-9010	



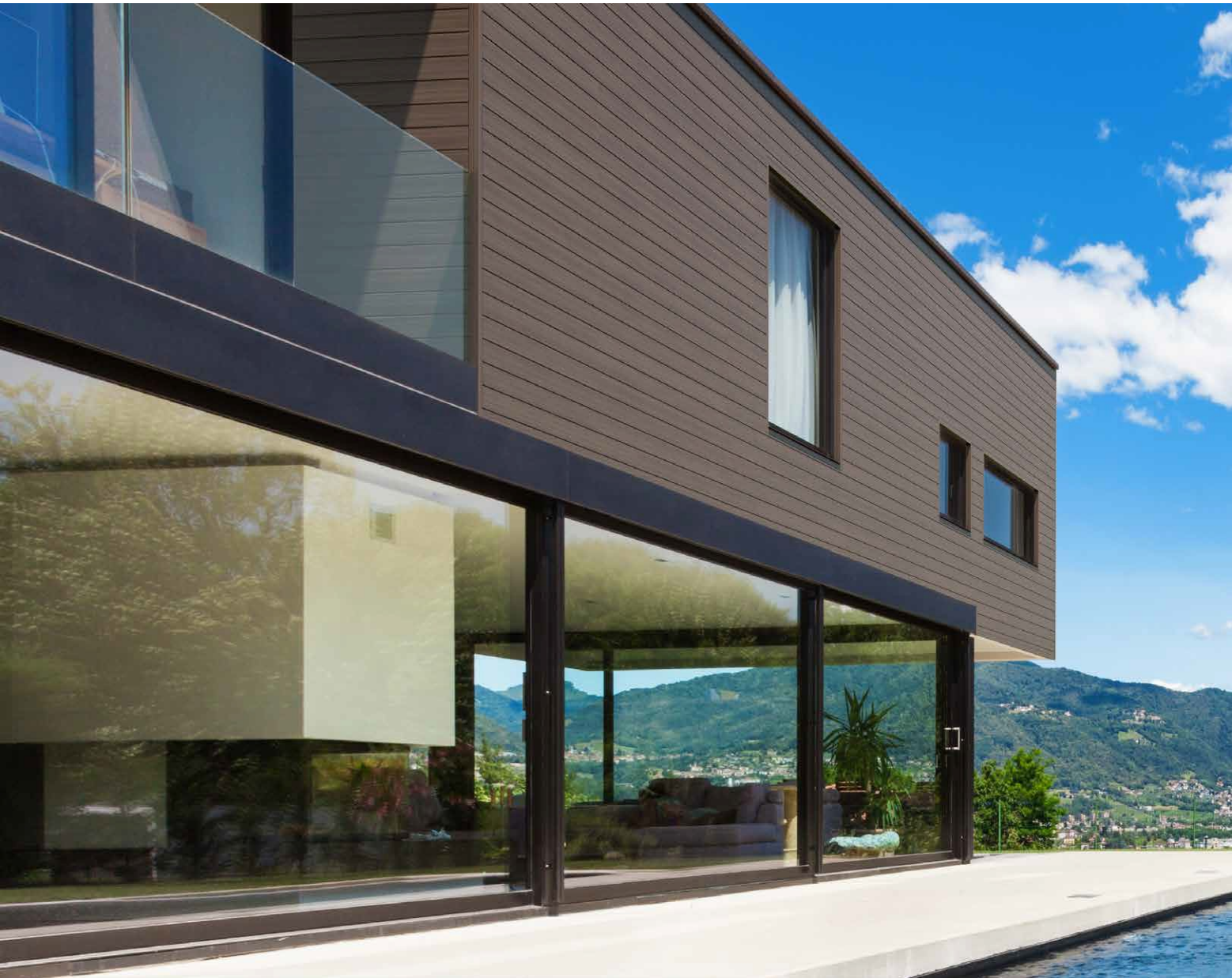
## Custom colors available



Water Based Coating Systems  
**AquaSurTech**  
OEM



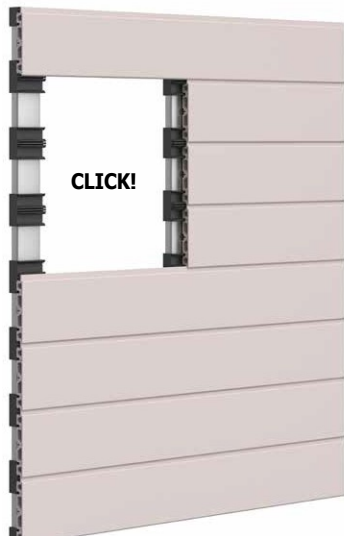






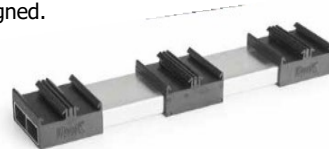
# Cladding 140mm EasyClick system

**iDecking Revolution** is proud to introduce a brand new board studied just for **Cladding**! These boards made in DURO (iDecking's composite material) can be Easily and Quickly installed by using **EasyClick**. The innovative system which allows you to put cladding boards in place without screws! Covering any vertical surface has never been easier! The **EasyClick** system helps ensure a quick, simple and trouble free installation with the self alignment of board joints.



## How does **EasyClick** system work?

**EasyClick** is an aluminium substructure rail which comes with pre-installed and pre-spaced patented **EasyClick** nylon clips. When pressing the cladding boards against the nylon clip, the boards are fixed and self aligned.



**DURO 140 Cladding Board**

**Size: 140x20mm (5,51 x 0,78 in)**

**Colour: All Duro/Duro Excellence colours**

### **HORIZONTAL DESIGN**



### **VERTICAL DESIGN**





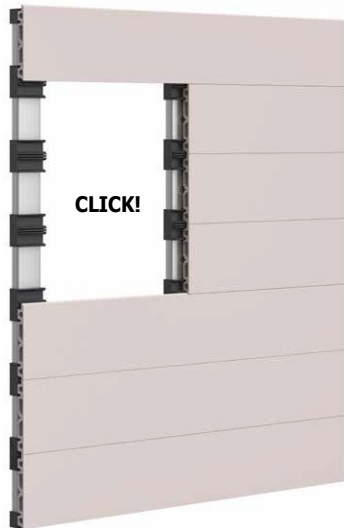


PRIVATE VILLA | Cladding 140 + Duro Natural



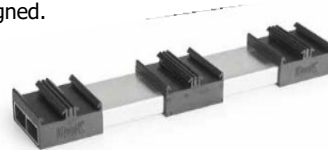
# Cladding 160mm EasyClick system

**iDecking Revolution** is proud to introduce a brand new board studied just for **Cladding**! These boards made in DURO (iDecking's composite material) can be Easily and Quickly installed by using **EasyClick**. The innovative system which allows you to put cladding boards in place without screws! Covering any vertical surface has never been easier! The **EasyClick** system helps ensure a quick, simple and trouble free installation with the self alignment of board joints.



## How does **EasyClick** system work?

**EasyClick** is an aluminium substructure rail which comes with pre-installed and pre-spaced patented **EasyClick** nylon clips. When pressing the cladding boards against the nylon clip, the boards are fixed and self aligned.



**DURO 160 Cladding Board**

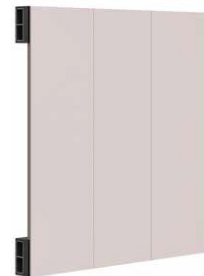
**Size: 160x20mm (6,29 x 0,78 in)**

**Colour: All Duro/Duro Excellence colours**

### HORIZONTAL DESIGN



### VERTICAL DESIGN

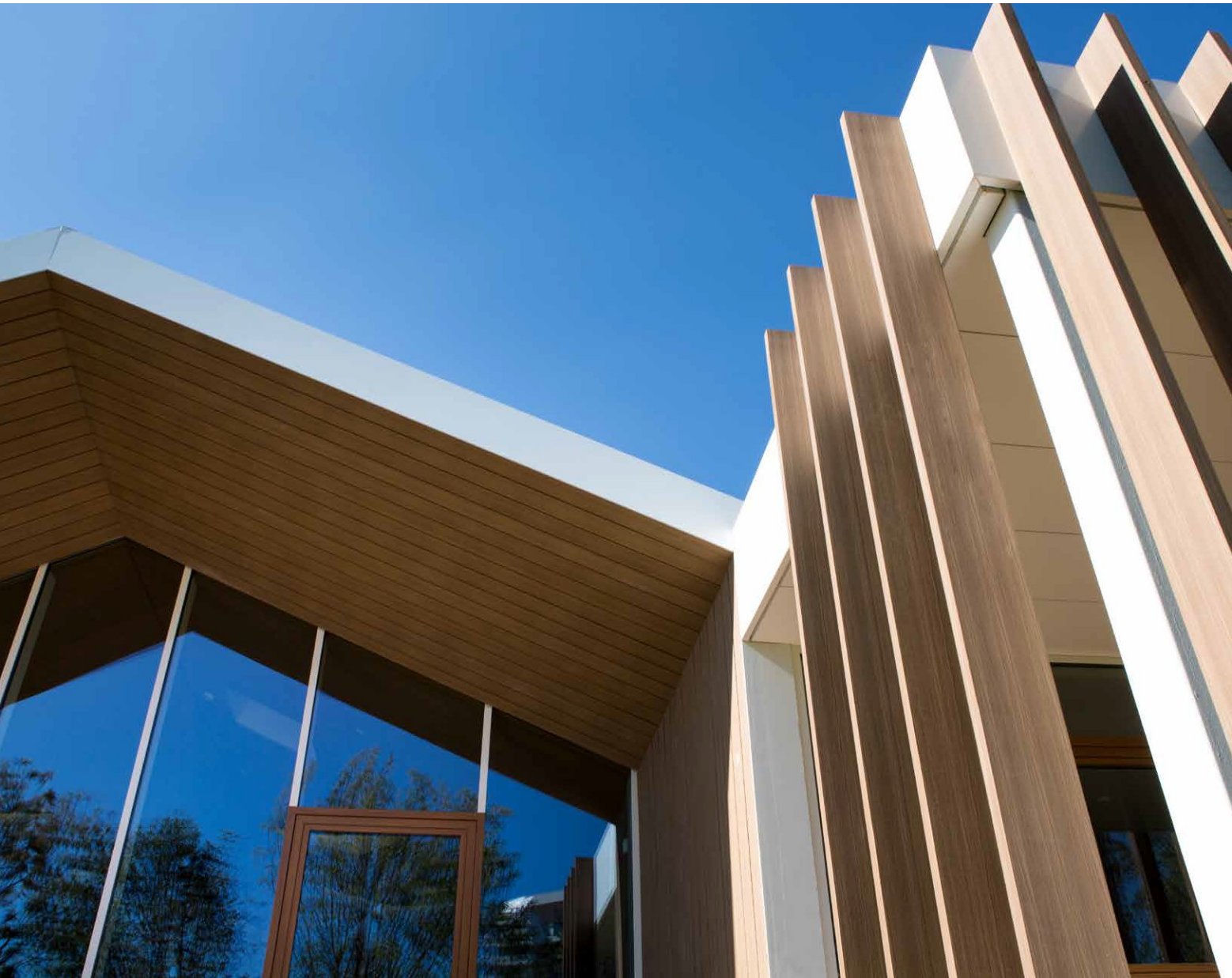






PRIVATE VILLA | Cladding 160 + Duro Natural











The iDecking Revolution is brought to you in the USA by Tri-Corp Decking, Siding, and Fencing and its partners. Tri-Corp is a leading Distributor of Sustainable Solutions for Exclusive Outdoor Projects. We can assist with everything from Conception to Construction. Find more information about iDecking, AST Coatings, and Tri-Corp's exceptional customer service at:

**[www.tricorpcoating.com](http://www.tricorpcoating.com)**

**email: [jbraye@tricorpcoating.com](mailto:jbraye@tricorpcoating.com)**

**via phone: 812-205-0131**