

PREFAB HOMES

Soak Up the Sun

The Hamptons I design (not yet built) by architect Douglas Cutler is the first of two angular designs in his collection of modular-ready plans. He says it would be perfect for a beach house, as it offers a lot of deck space on both levels. The house also has a large, triangular living room and a den on the first floor.

Cutler points out that modular homes never come from the factory 100% complete; they still require site-built elements, including applied siding, trim, porches, and decks. Cutler's firm has created many custom modular home designs, many of which have been re-marketed through builder/dealer factory affiliates. Modular building will become even easier, as architects like Cutler and Resolution: 4 make plans available online for direct sale to builders or customers.

Bedrooms: 2

Bathrooms: 2.5

Square feet: 2,240

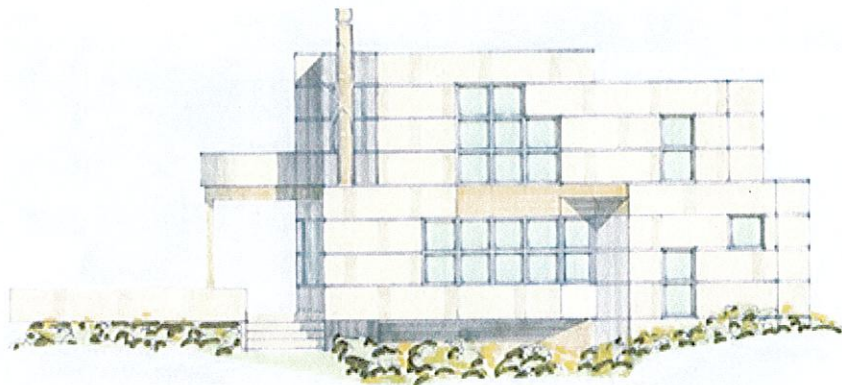
Number of modules: not available

Price: not available

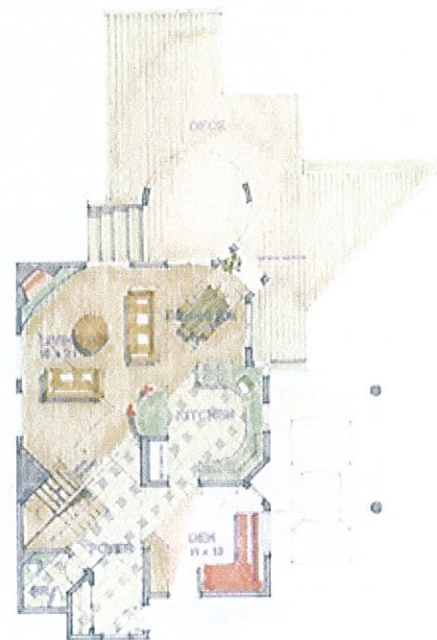
Factory production time: about 5 days

Architect: Douglas Cutler, R.A.

[More Slide Shows](#)



SECOND FLOOR



FIRST FLOOR

HAMPTONS I
2,240 S.F.