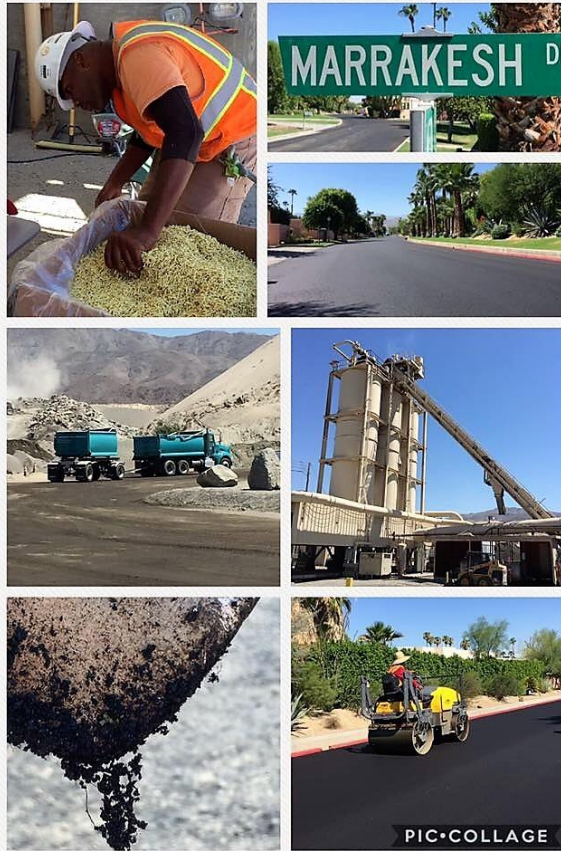


ACE Fibers Pave a Grand Entrance for California's Marrakesh Country Club

By [Dylan Berkley](#) October 13, 2017



In the chic Palm Desert region of California, the owners of the historic Marrakesh Country Club faced overwhelming roadway maintenance costs as they grappled with a history of standard mix designs that resulted in rapid weathering and failure.

Experts from California Filtration Specialists (CFS) and Surface Tech immediately realized the many benefits Marrakesh Country Club could realize by using ACE Fibers. After analyzing the project pavement design, Surface Tech was able to provide Marrakesh Country Club with a ¼ inch reduction in asphalt thickness, which resulted in significant cost savings.

“ACE Fibers reinforce the pavement so that it can withstand a harsh environment such as the California desert,” said Joe Dennis, Director, Asphalt Division – Surface Tech. “The Marrakesh Country Club team was optimistic that ACE Fibers could provide the exact solution they were in search of – strength,

durability, and longer life expectancy.”

The project specified an ACE Fiber Reinforced Asphalt Concrete (FRAC) mix design. Over 10,000 ton equivalents of ACE FRAC were used on the five-week project for the country club's roadways.

About ACE Fibers:

ACE Fibers, a Surface Tech asphalt additive, uses aramid fibers to address the two major distresses affecting asphalt performance today; cracking and rutting. Doing so also dramatically improved the treated roads' life expectancy.

When ACE Fiber is mixed into asphalt, it disperses over 19 million Aramid fibers throughout each ton of mix to provide 3-dimensional reinforcement that increases the asphalt's resistance to reflective cracking, rutting, fatigue and increased life expectancy. And best of all, no specialty contractors are needed for installation. Contractors handle ACE Fiber reinforced asphalt the same way they handle standard asphalt. This underscores ACE's technology in being easy to adopt.

