

CAMBRIDGE

Design-Build



Commercial and Manufacturing Experience

2018

www.cambridgecoinc.com

CAMBRIDGE

Design-Build



Aviation and Commercial Experience

2018

www.cambridgecoinc.com

CAMBRIDGE

Design-Build



Manufacturing and Commercial Experience

2018

www.cambridgecoinc.com

CAMBRIDGE OVERVIEW

HISTORY

📍 Founded **1988**

👤 **Family** Owned & Operated

Active Family Members in Indiana office:

Ray Eriks, *CEO*

Linda Eriks, *President*

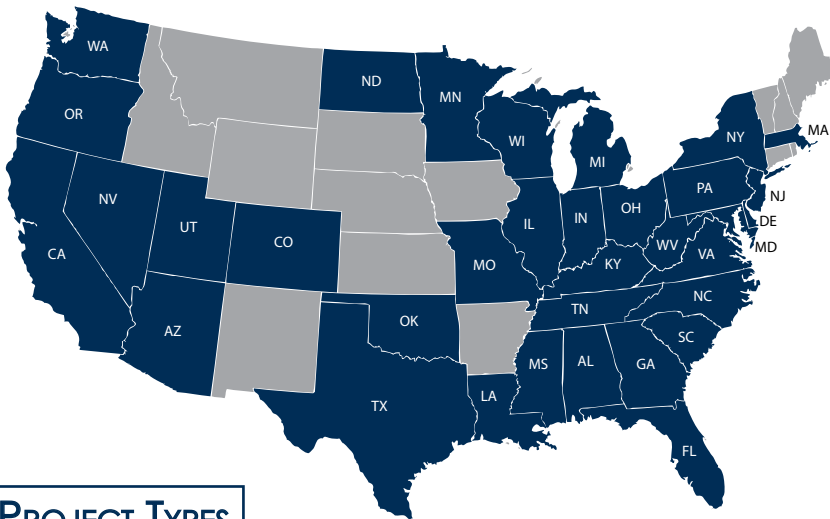
Arizona Office:

Jeff Eriks, *Vice President*

Cambridge is a family owned company operating throughout the mainland 48 states. We take pride in working for clients that have high expectations and require their design-build partners to carry an expertise above just building buildings. Our philosophy is that we are project partners. We learn your business & operations as part of the early-on process before we begin to generate any conceptual drawings for your project. If we don't understand your business, we can't develop plans that are operationally efficient and cost effective for you to own.

We customize our operations to meet your needs. Every customer has different needs and requirements and reporting needs and we are sensitive to that. Therefore we work with you to develop the program that best suits your needs. Our customer experience is geared around creating a relationship that leads to your success both during the design/build process and long after when you are operating. Many clients are expanding, therefore Cambridge has completed projects in over 25 states and carries active contractors licenses in over 20 states and can get additional licenses as needed.

EXPERIENCE



PROJECT TYPES

Commercial

Hospitality
Office/Professional
Maintenance Shops

Light Industrial

Warehouses
Laboratories

Environmental

Recycling Facilities
Transfer Stations

SAFETY IS THE #1 PRIORITY

- * 0.75 EMR Rating
- * All construction staff are working toward being OSHA 30 hr trained.
- * All subcontractors are required to be screened and verified to work on site.

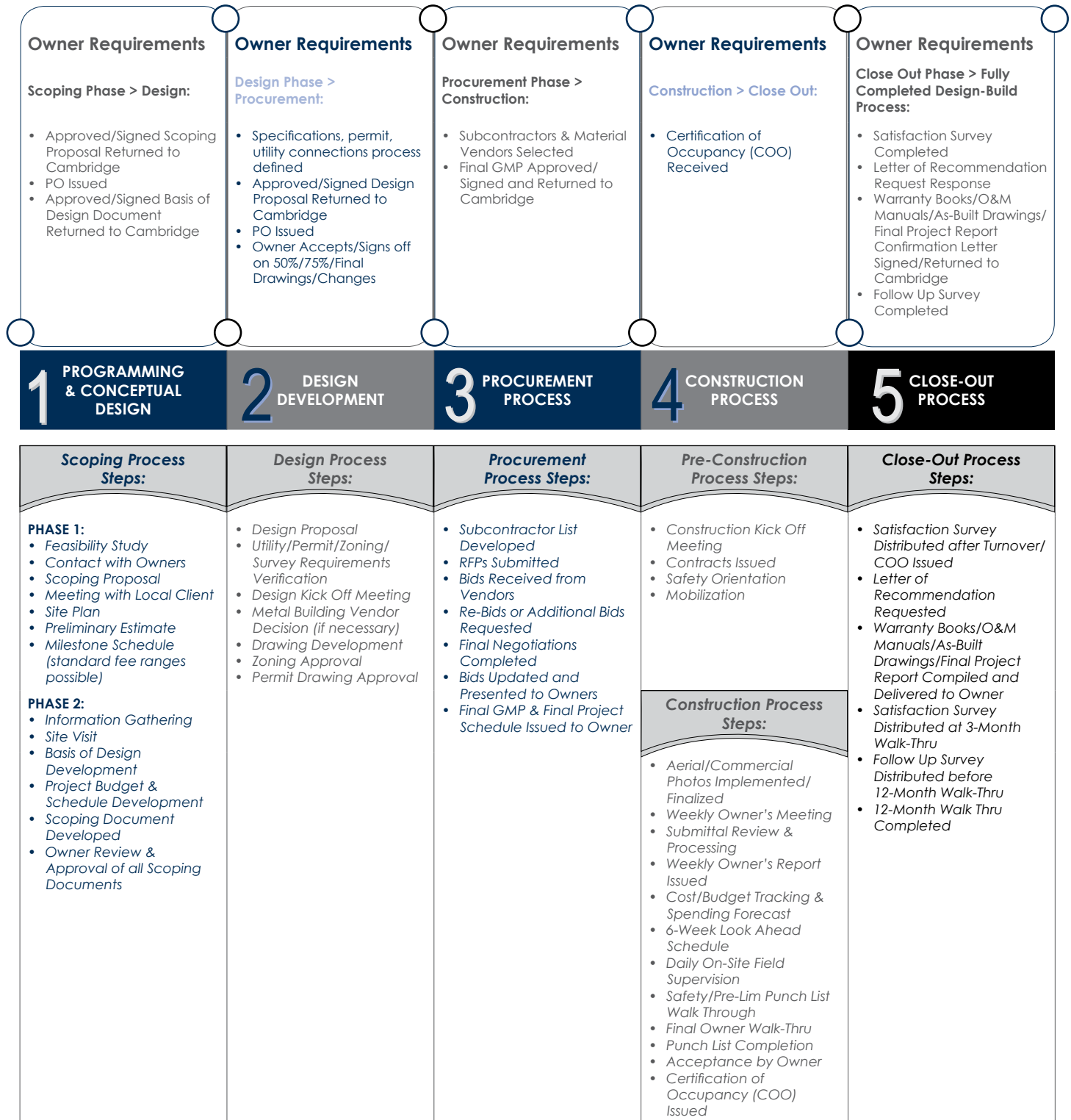
DESIGN-BUILD METHOD

At Cambridge we prefer to work in the area of design/build. To a project partner, it may not matter, but the design/build method gives us and you more control of the overall process from beginning to end. It allows us to customize the design to meet your needs, it requires less day-to-day management of the design from the customer and it helps to control costs and shorten the overall project delivery timeline.

Another unique aspect about Cambridge is that we do all of our projects open book. We will negotiate markups & labor fees and the rest of the project is bid out and reviewed with the client in detail. No hidden fees or costs. We feel honesty and openness is the best way to create a life-long partner.

CAMBRIDGE DESIGN-BUILD PROCESS

STEPS & DOCUMENTATION INFORMATION



RECENT PROJECTS

RECENT DESIGN & CONSTRUCTION PROJECTS:

IN PROCESS DESIGN-BUILD PROJECTS:

- **Transfer Station - Chicago Heights, IL**
- **Fire Line Relocations - Mesa, AZ**
- **Feedstock Processing Facility - Reno, NV**
- **Illinois Office - Crestwood, IL**
- **Material Recover Facility (MRF) - New York**

- **Arizona Bulk Loading Facility - Mesa, AZ**
 - Construction in process; completion scheduled April 2018
 - Design and permitting completed December 2017
- **Texas Maintenance Shop - Houston, TX**
 - Construction in process; completion scheduled May 2018
 - Design and permitting completed October 2017
- **Florida Landfill Scale House and Scales - St. John's County, FL**
 - Construction in process; completion scheduled May 2018
 - Design and permitting completed December 2017
- **Georgia Hauling Company**
 - Construction in process; completion scheduled July 2018
 - Design and permitting completed December 2017
- **Texas Hauling Company Remodel - San Antonio, TX**
 - Construction in process; completion scheduled August 2018
 - Design and permitting completion scheduled December 2017
- **Maintenance Shop Improvements - Springfield, IL**
 - Construction in process; completion scheduled September 2018
 - Design and permitting completed December 2017

COMPLETED DESIGN-BUILD PROJECTS:

- **SOCRRA MRF - Troy, MI**
 - Construction completed January 2018
 - Design and permitting completed July 2017
- **Nevada Compactor & MRF Shop Addition - North Las Vegas, NV**
 - Construction completed December 2017
 - Design and permitting completed November 2016
- **Texas Hauling Company - Lewisville, TX**
 - Construction completed November 2017
 - Our client contracted s to design and build a new state of the art hauling facility and operations unit in Lewisville, Texas. This "flagship" facility features 13,000 sq. ft. of Class A office space complete with a high-end locker room, breakroom, and training room. The facility has an 8-station fueling island under canopy, automated wash bay, and parking for over 100 trucks. All of this complete with an 8-bay truck maintenance shop containing every modern feature available. Too many features to list entirely, but a paver patio outdoor break area, safety lane, gated entrance, polished concrete floors, audio/visual system, employee charging station, mechanical partition wall for training, and boots drying system are some of the highlights of this facility.
 - Hauling Company size = 25,328 sq. ft.; Wash Bay size = 1,932 sq. ft.; Site size = 9.86 acres

- **Georgia Office - Marietta, GA**
 - Construction completed June 2017
 - A client required their Georgia office renovated to accommodate interior upgrades, an increase in the number of offices, and an increase in parking spaces. This remodel included decreasing the overall training room size to accommodate additional offices; break room and restroom facility upgrades; updated lighting; updated heating & air units; and upgraded ceiling, walls, tile and carpet. The exterior works included paving and retaining wall work to create seven additional parking places, an outdoor patio break area, and upgraded exterior lighting.
- **Ohio Hauling Company - Elyria, OH**
 - Construction completed July 2017
 - An expanding Compressed Natural Gas (CNG) fleet required a larger, modern maintenance repair facility for our client in Ohio. A 30' tall and over 20,000 SF maintenance facility was constructed with six drive-thrus (12 individual) truck repair bays. In addition to the repair shop, one end of the facility houses two offices, a parts room, lubrication tank room, a break room with restroom facilities, and a currently vacant second story mezzanine area. Lubrication and air lines were made available to all bays, a fully automated fire suppression and gas detection system were installed, and all lighting fixtures are LED. As part of the overall project, the site also underwent significant upgrades to approximately 6 acres of gravel parking lot and driveways to either concrete or asphalt pavement, and all exterior lighting was upgraded to LED fixtures.
- **Missouri Transfer Station - Kansas City, MO**
 - Construction completed February 2017
 - Our client bought an existing MRT facility that required several upgrades and improvements. Electrical needed to be brought up to code, new door, loading pit, protection and site paving were the main scopes of work.
 - Transfer Station size = 42,675 sq. ft.; Site size = 8.31 acres
- **Texas Solidification Pits - Odessa, TX**
 - Construction completed November 2016
 - The client required the addition of solidification pits to an existing landfill site in Texas. The scope of work included construction of the solidification pits, surrounding aprons, excavator guide rail/track, and fall protection railing.
 - Solidification pits = 60 ft. x 20 ft. x 12 ft. deep; Area of disturbance = 129 ft. x 55 ft.
- **Camin Cargo Laboratory - Griffith, IN**
 - Construction completed September 2016
- **Indiana Pre-Treatment Plant - Brook, IN & Illinois Wastewater Loadout Pad - Kankakee, IL**
 - Construction completed June 2016
 - Treatment building = 9,600 sq. ft.; Tank size = 6,550 sq. ft. / 760,000 gal
- **Texas Scale House - Pecos, TX**
 - Design-Build completed May 2016
 - Based on the success of a previous scale house project, our client requested we perform a similar scope and timeframe for this scale house. The scope of work included a new scale house, ADA ramps, employee covered patio, an entry road, monument sign and all utilities at a landfill.
 - Scale house size: 62 ft. x 30 ft. modular building; Site size: 298.7 acres
- **Perfection Bakery - Lowell, IN**
 - Design-Build completed April 2016
 - Perfection Bakery acquired a new facility that needed the loading docks to be fitted for their trucks. The remodel of the facility included new overhead doors, frames, loading dock bumpers and ramps, truck drains and sump pumps. During construction, several items were added to the scope of work including a new ramp on the north wall.
 - Area of disturbance = 11,493 sq. ft.; Site size = 782,544 sq. ft.

- **Cape Girardeau Transfer Station – Cape Girardeau, MO**
 - Design-Build completed March 2016
 - The City of Cape Girardeau was in need of a new transfer station facility located adjacent to their other public works facilities. Using the design-build process, Cambridge was able to work with The City to develop a cost effective, operationally efficient, and durable facility that meets their throughput needs for now and years to come. The 9,200 sq. ft. facility/2,500 sq. ft. office and 3.5 acre site will receive MSW, recyclables, white goods, and other items to centralize collections for The City and provide a convenient drop off site for residents. The City was a great partner and we look forward to working with them in the future.
- **Texas Scale House – Odessa, TX**
 - Design-Build completed January 2016
 - Cambridge installed a new 1,110 ft. entry road with 2 entry lanes and one exit lane. The 1,100 ft. road involved moving and importing over 60,000 tons of soil, rock, and type II base. The new road was built with an average of 3 ft. of fill over the entire road (approximately 77,000 sq. ft. of surface area). The site construction included a new concrete approach entrance, foundation for scale house, future scale area, parking area, patio and sidewalks.
 - The 1,500 sq. ft. scale house, with a truck inspection area, consists of a two piece modular unit that was lifted and installed on top of the concrete foundation. All utilities, including power, water, septic system and underground conduit were installed for future fiber optics.
- **Nevada Recycling Center – North Las Vegas, NV**
 - Design-Build completed November 2015
 - In order to meet the increasing demand for processing recyclables in Southern Nevada; The Owners, Equipment Manufacturer and Cambridge worked together to develop an efficient, durable long term solution for the market. The new 110,000 sq. ft. recycling center incorporates state-of-the-art electrical components and control systems, natural daylighting, safe work flow for the employees and solar panels on the roof. In order to achieve flexibility, the building was designed to be expandable in multiple directions to add more square footage under roof. The new facility will serve the client and the greater Las Vegas market for years to come.
- **Michigan Transfer Station – Kalamazoo, MI**
 - Design-Build completed July 2015
 - Due to some unfortunate circumstances, the client was forced to re-build their existing transfer station in Kalamazoo. Our goal for the project was to re-use as much of the existing foundation as possible and construct the new 20,000 sq. ft. facility on and around the remaining push walls and foundations. Along with the new building, scale house & utilities, Cambridge also modified the pit to a standard lift and load operation to help ease operations. The result was a durable, efficient transfer station facility on their 4.25 acre lot.
- **Tennessee Container Repair Shop – Nashville, TN**
 - Design-Build completed April 2015
 - Due to the sales of some current assets, the client wanted to re-purpose an existing 8,500 sq. ft. cross-deck building they owned at their hauling company site. Cambridge removed the raised floor and lowered it to grade, created new overhead door openings, remodeled the office area and installed a paint booth to create a new container repair shop for the local division. The repurposed facility provided 4 working bays plus a paint booth at a facility that was previously just used for storage.
- **Texas Landfill Shop – Edinburg, TX**
 - Design-Build completed March 2015
 - There was a need in the local market to construct an office area, maintenance shop and wash bay for the local landfill employees. We constructed a 2,600 sq. ft. landfill shop with a 2-bay, drive-thru shop with exterior wash area as well as a 2,000 sq. ft. building with offices, locker rooms, break areas and parts storage. The shop is designed with plate steel on the floor to protect it from the heavy equipment as well as a 10-ton overhead crane.

- **Texas Solidification Tanks – San Antonio, TX**
 - Design-Build completed February 2015
 - Cambridge was hired to construct two new pits at the landfill to help the client meet their increasing demand of liquids coming into their landfill and to expand their market base. This facility was designed to accommodate two additional pits adjacent to these as well as a roof. The interior of the pits are 60' long x 12' deep x 20' wide and constructed of cast-in-place concrete and steel plate and misc. embeds. Railings surround the pits to ensure safety and the tipping areas have swing gates to access.
- **Texas Landfill Solidification Basins – Beaumont, TX**
 - Design-Build completed January 2015
 - The client was in need of an area for solidification at their Golden Triangle Landfill. Cambridge constructed (2) 24'x35'x10' cast-in-place concrete pits with appropriate fall protection. The area also consisted of a pole barn for media storage as well as an area for the excavator and haul trucks to operate.
- **Arizona Transfer Station – Chandler, AZ**
 - Design-Build completed December 2014
 - The Germann Rd transfer station was constructed to meet the needs of the local municipalities and the increased volume. It is 20,000 sq. ft. transfer station with (6) tipping bays and a drive-thru pit on 9.95 acre lot. This facility is designed to handle up to 1,500 TPD.
- **Indiana Hauling Company – Evansville, IN**
 - Design-Build completed November 2014
 - Evansville was in need of a new facility with a CNG compliant shop to meet local contract requirements. The new facility has a 13,000 sq. ft. maintenance shop with (6) maintenance bays, 1 lube equipment & storage bay, (1) wash bay and a 5,600 sq. ft. office area to accommodate all the drivers, training, locker rooms and operations team on a 7 acre lot. It also has a 5,200 sq. ft. mezzanine on the second floor for storage and future expansion.
- **Texas Hauling Company – Austin, TX**
 - Design-Build completed October 2014
 - It was necessary to relocate operations due to the expiration of a lease on the client's previous property. Fast-track completion of site work and interior remodeling of an existing office and shop were required to accommodate the relocated hauling operations. In 14 weeks, Cambridge constructed a 12,500 sq. ft. office and 4,500 maintenance shop on an 11.6 acre lot.
- **Oregon Hauling Company – Wilsonville, OR**
 - Design-Build completed October 2014
 - The new 13,000 sq. ft. maintenance shop with a 1,500 sq. ft. mezzanine and 1,500 sq. ft. office building has (8) working bays and can accommodate a crane, fully automated lube system and truck lifts. There are several welder plugs, air connections and hose bibbs spread throughout the shop for ease of reach by mechanics.
- **Red Diamond Transfer Station – Conroe, TX**
 - Design-Build Completed October 2014
 - This new transfer station was designed to handle up to 1,500 TPD with (4) tipping doors, (2) loading areas for semi's and a drive-thru pit with full deflectors to help keep the pit clean. Completed design of a 13,000 sq. ft. maintenance shop with a 5,300 mezzanine and 6,000 sq. ft. office building on approximately 7 acre lot.
- **Massachusetts Transfer Station – Fall River, MA**
 - Design-Build completed September 2014
 - This facility is a 20,000 sq. ft. building that is constructed at the now closed landfill and adjacent to the hauling company. It was designed large enough so that the team can manually sort some commodities within the transfer station and create bunkers for storage.

Additional Construction Experience Available Upon Request

EXPERIENCE



Project Scope: New Build, Design & Construction
Project Size: 32,000 sq. ft.
Site Size: 5 acres
Timeframe: Nine (9) months

Description: New 32,000 sq. ft. multi-purpose religious facility with expansion possibilities to approximately double the size.



EXPERIENCE



Project Scope: New Build, Design & Construction
Project Size: 18,000 sq. ft.
Site Size: 7 acres (+/-)
Timeframe: Ten (10) months

Description: This particular project was built in 2 phases. The first phase was an adjacent building on site to process MSW. The second phase was the offices and maintenance building pictured here. The first building was a 20,000 SF PEMB with cast-in-place concrete walls, heavy duty, reinforced concrete floor and large OH doors. The second phase was a masonry block structure with steel roof and siding. The 2-story office area consists of locker rooms, meeting areas, training room, offices and employee break areas. The rest of the building houses the maintenance area and associated programmatic requirements.



EXPERIENCE



Project Scope: New Build, Design & Construction
Project Size: 108,611 SF
Site Size: 17.25 acres
Timeframe: Eleven (11) months
Completion Date: November 2015

Description: This facility in North Las Vegas consisted of cast-in-place concrete walls, pre-engineered steel building with (4) different operations within it. The inbound material building which consists of a 42' eave height PEMB, heavy duty, reinforced concrete slab and cast-in place walls. The material processing area also has a 42' eave height, pre-cast walls, varying slab depths based on equipment and operating requirements. There is a loading dock for outbound material which is a 22' eave height, 8" slab and (5) dock doors. The last area is a 2-story masonry office area with a built-up roof. This facility also had over 30,000 SF of solar panels installed on the roof.



EXPERIENCE



Project Scope: New Build, Construction
Project Size: 5,000 SF
Site Size: 1.9 acres
Timeframe: Four (3) Months
Completion Date: May 2018

Description: This expansion to an existing manufacturing plant was completed while the plant remained in operation. In addition to the pre-engineered steel building the complex delivery of chemical products included: Four (4) truck bays for 80,000 lb. isotainer tankers, a pipe bridge with stainless steel process piping for high quality chemical products, a fire foam suppression system, LEL monitoring, personal safety station, LED lighting, fire alarms, fiber optics security system, saferack gangways and cages on pedestals to serve the tankers and lightning protection.

EXPERIENCE



EXPERIENCE

Camel Square Office Complex



Disclaimer: Jerry Atwood pre-Cambridge experience
Griffith, IN | Scottsdale, AZ
866.972.1155 | www.cambridgecoinc.com

EXPERIENCE

Desert Highlands Golf Club



EXPERIENCE

Forest Highlands Clubhouse (Canyon & Meadow)



Disclaimer: Jerry Atwood pre-Cambridge experience
Griffith, IN | Scottsdale, AZ
866.972.1155 | www.cambridgecoinc.com

EXPERIENCE

Gainey Ranch Golf Club



EXPERIENCE



EXPERIENCE



EXPERIENCE



EXPERIENCE

Camel Square Office Complex



EXPERIENCE



EXPERIENCE



EXPERIENCE



EXPERIENCE



Project Scope: Design-Build
Project Size: 1st floor: 174,700 sq. ft.
2nd floor: 23,200 sq. ft.
Completion Date: 2000
Const. Cost: \$35,000,000
Architect: Jerry Atwood

Description: Site Planning, Architecture and delivery of a air cargo facility with air-side and Land-side service on the south runway of PHX airport. Wall structure was site-cast concrete 10 ft high with steel bent frame. The bents were reversed outside to allow for full height material handling systems. HVAC included central evaporative cooling in the work bay with DX AC for offices. Security included overhead double doors, solid and grate type to secure air-side and land-side. Project included extended concrete aprons and land-side drive and truck parking.

Features:

- ✂ Dimensions: 120 x 1,380 x 30
- ✂ FedEx Tenant Improvements, 92,200 sf
- ✂ UPS Tenant Improvements, 31,700 sf
- ✂ Land-side truck docks and ramps
- ✂ Employee and public parking



EXPERIENCE

Forest Highlands Clubhouse (Canyon & Meadow)



EXPERIENCE



EXPERIENCE



Description: The Ocotillo Campus in Chandler, Arizona, is the home of FAB12, a \$1.3 Billion project to construct a fabrication factory the Pentium II microchip. Over 3,000 craft workers peaked on site for a fast-track completion by the end of 1996. Atwood was one of 3 Construction Managers with Hoffman Construction, Portland. Goal: Class-1 Clean Rooms: Maximum 1 particle, 0.5 microns per 1 cubic foot of air. Hospital operating rooms are Class 10,000. Start to Finish 600 days.

Senior Construction Manager ... Jerry Atwood
Contractor ... Hoffman Construction
Architect ... IDC, Portland
Const. Cost ... \$525,000,000

Site ... 723 acres
Project ... Largest construction project in the USA
Utilidors ... 4 miles
Steel ... 6,000 tons
Concrete Block ... 478,000 blocks
Concrete ... 100,000 cubic yards

Piping ... 145 miles
Electrical Peak Power ... 40 megawatts
Conduit ... 60 miles underground
Height ... FAB Building 7-stories
Square Feet ... approximately 1.5 million SF
Warehouse ... 90,000 SF
Columns Basement & SubFab ... 1,100
Waffle Slab ... 2.5 football fields
Cooling Capacity ... 2,000 tons
Water ... 200,000 gallons in cooling system

EXPERIENCE

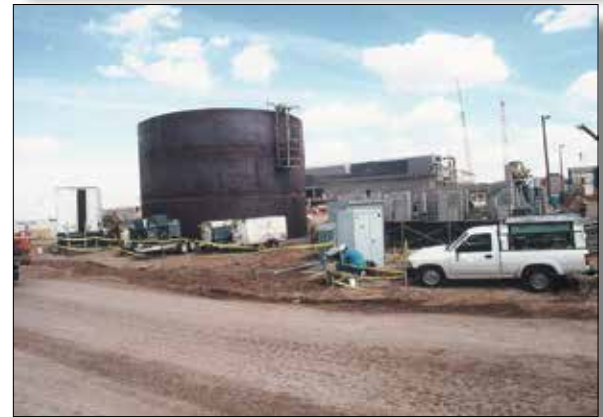


EXPERIENCE



Senior Construction Manager ... Jerry Atwood
Contractor ... Hoffman Construction
Architect ... IDC, Portland
Const. Cost ... \$22,461,000

Site ... 723 acres
Utilidors ... 4 miles
Site & underground systems ... Argon Pad,
 Bulk Gas Yard,
 SRP main Substation 40 megawatts,
 15 KV Service Entry Swithgear,
 Sewer Instrumentation & Controls,
 Site Lighting,
 Fire Water holding pond,
 Exterior signs,
 HR trailers & parking lot,
 Site Life Safety Systems/Alarms,
 Electrical duct bank,
 Nitrogen piping,
 Purifier building,
 Water Main,
 Fire Line,
 Sewer



EXPERIENCE



EXPERIENCE



EXPERIENCE



EXPERIENCE



EXPERIENCE



EXPERIENCE



Project Type: Aviation

Project Size: 130,000 sq. ft.

Site Size: 5.8 acres

Timeframe: Twelve (12) months

Architect: Swaback Partners

Description:

Provided PM services for a new design concept and construction for a one of a kind private jet hangar complex using ultramodern aerodynamic and fanciful exteriors and art. Roof forms are clad in riveted aircraft aluminum that forms the leading edge of a wing. A giant "paper airplane" sculpture crafted of metal reflects the wonder of flight. Two hangars and 50,000 sq ft of secured office and event space for members, crews and their guests. The site on the airside was a concrete apron and on the landside a landscape court. There were several structural systems needed including wide-flange steel girders and metal decking for the hangars, site-cast concrete exterior walls, steel joists and metal decking for the event rooms. Office space included conference rooms, private offices and a business center. Special systems include a fire foam suppression system, security system, telco/ data links, epoxy flooring and high-quality millwork.



EXPERIENCE



Project Scope:

New Build, Construction

Project Size:

120,777 sq. ft. gross,

95,258 sq. ft. net

Site Size: 7.5 acres

Timeframe: Six (6) months

Description:

An institutional Class A self-storage facility scheduled for completion in June 2018 with nine buildings including 546 climate-controlled units, 189 drive-up units, 27 open RV parking spaces and 28 covered RV parking spaces for a total of 790 units in a mix of 1 and 2 floor units. Requirements of the Master Planned community include landscaping, street setbacks, architectural stone facade, personal keyed entry gates and compliance with the architectural design ordinance.



EXPERIENCE



Project Type: Mission Critical Response Center

Project Size: 5,000 sq. ft.

Site Size: 1 acre

Timeframe: Nine (9) months

Location: Glendale, AZ

Description:

A fire and emergency response center for Rural Metro, now owned by American Medical Response, supporting the City of Glendale, including electrical, HVAC, security, AV and data systems. Openings included tempered plate storefronts and doors. Finishes included ceiling, walls and floors and millwork. All equipment by Rural Metro.



EXPERIENCE



Project Type: Aviation
Client: Eclipse Aviation
Project Size: 90,000 sq. ft.
Site Size: 7.88 acres
Timeframe: Twelve (12) months; completed 2001
Location: ABQ Albuquerque Sunport

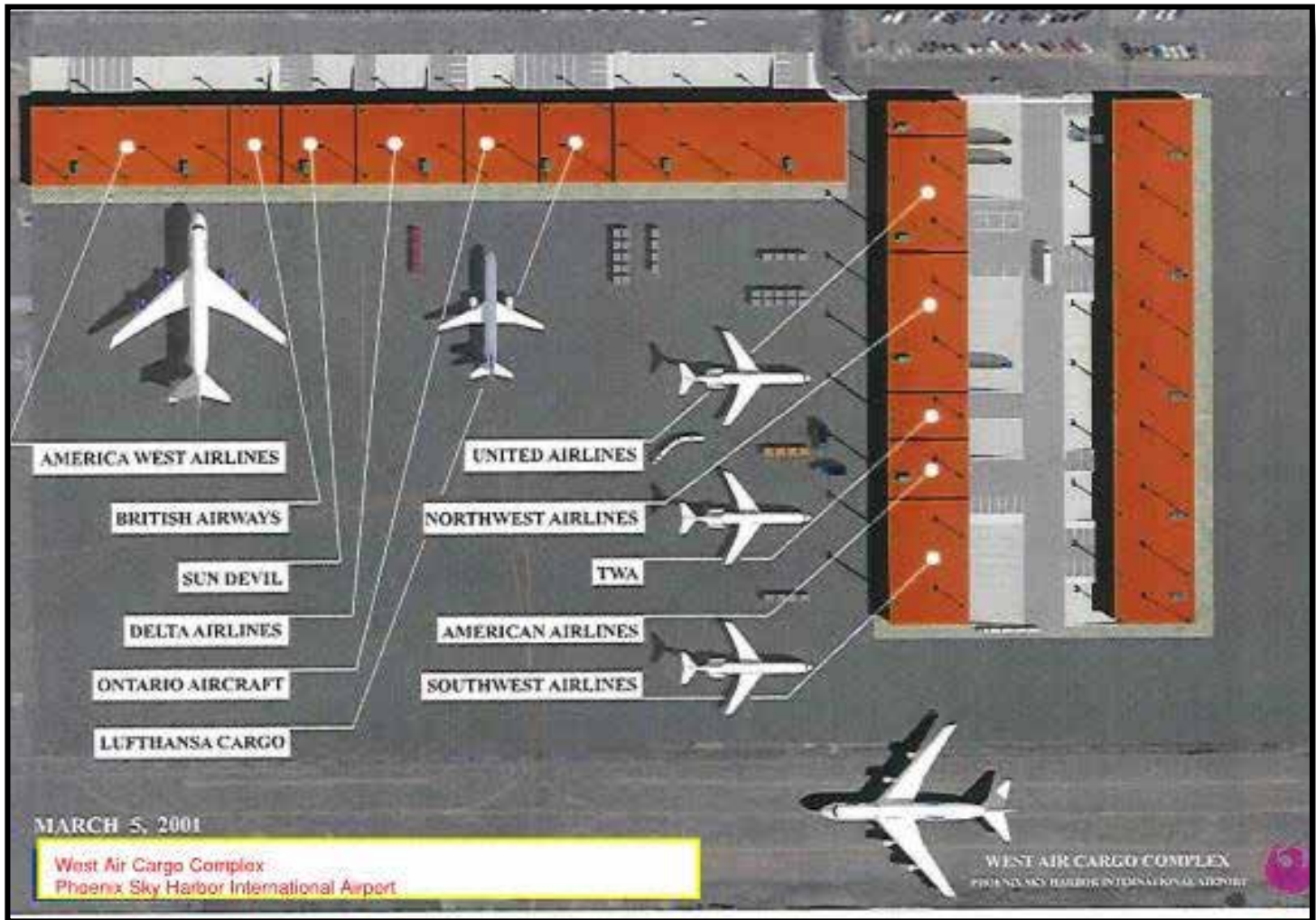


Description:

Apron planning, architecture and engineering services for aircraft assembly, offices, lobby, sales hangar and prototype test hangar for the E500 and E550. Ceiling height 35 ft., occupancy B-office and F-1 factory, Steel frame structure with new Fire Sprinkler systems, mechanical and electrical systems, security system, telco/data and tenant improvements.



EXPERIENCE



Project Type: Aviation

Project Name: West Air Cargo

Project Size: 178,560 sq. ft.; 80 W x 2,232 L x 10 H

Land Size: 4 acres **Air-Side Size:** 8 acres

Completion Date: 2001

Project Budget: \$12 million

Location: PHX Phoenix Sky Harbor Int'l Airport

Description:

Project Architect and PM role for Scope of Work, budget and renovation of the existing buildings adding new Automatic Fire Sprinkler system; Evaporative cooling, AD DX for office space, 600 & 800 A SES, overhead grate and solid doors air-side and land-side; security access card system; US West Fiber Optic Hub room; automated building controls; air-side light pilons for the apron. New Tenant improvements for 10 major airlines.



EXPERIENCE



Project Type: Aviation
Project Name: South Air Cargo Complex
Project Size: 174,724 sq. ft.; 120 W x 1,380 L x 30 H
Land Size: 4 acres **Air-Side Size:** 8 acres
Completion Date: 2000
Project Budget: \$35 million
Location: PHX Phoenix Sky Harbor Int'l Airport

Description:

Project Architect and PM role for site planning, architecture and engineering. ¼ mile long air-side jet delivery, land-side truck delivery. Structural frame of site-cast concrete tilt walls, steel bents and trusses with a Kynar Copper standing seam roof; AC and Evap cooling; overhead double doors; access and door security system; US West Fiber Optic hub room; FedEx tenant space 50%; UPS tenant space 40%, US Customs tenant space 10%; 60 ft reverse steel bents for light standards; truck docks and employee parking



Arizona



Cambridge Design-Build is a division of Cambridge Companies, Inc.

7590 E. Gray Road, Suite 201
Scottsdale, AZ 85260
480.253.1260

500 E. Ridge Road, Suite 202
Griffith, IN 46319
219.972.1155

CAMBRIDGE

Design-Build

www.cambridgecoinc.com