



## **For General Distribution**

**August 2018**



# Offices & Locations

**Headquarters and design engineering Located in Milwaukee, WI and Allen, TX**

## **Sales Office Locations (MSFDS Mfg. Office)**

(10+ Sales & management professionals)

- Milwaukee, Wisconsin
- New York, New York
- Allen, Texas

## **Manufacturing and Component Prototyping**

- Allen, Texas (engineers and metal technicians)
- Overflow facilities
  - Longhorn Fabrication (Heavy Metal)
  - Waukesha, Wisconsin (engineers and metal technicians)
  - Grafton, Wisconsin (engineers and metal technicians)

## **Software & Firmware Development**

(software & hardware engineers)

- Milwaukee, Wisconsin
- Allen, Texas

## **New Product Development, Introduction & Deployment**

- Certifications, Configuration Validation, 3PP Build Verification
- Support in solving Customer Core and Site Challenges
- Antenna, RF, Microwave, Enclosures, Power, Transmission, In-building



# Partners & OEM Development Agreements

## MSF All Metals – Allen Texas

- Partnership Agreement NDA's
- MSF Financial Investment
- Shared Engineering Resources
- Allen, Texas

## Manufacturing Back-up & Contingency Plans

- Waukesha Metals – 2 facilities (similar facility's export all paint to others Locally)
- Wisconsin Metals (similar facility export all paint to others Locally)

## Ericsson (cabinet, power distribution, certification, assembly)

- NDA
- OEM Master Development Agreement

## Nokia (cabinet, power distribution, certification, assembly)

- NDA
- OEM Master Development Agreement (in Process)

## T-Mobile (Utility Metering, Energy Storage & Energy Management, IoT Reseller)

- NDA
- OEM Master Development Agreement

## Sprint (Utility Metering, Energy Storage & Energy Management, IoT Reseller)

- NDA
- OEM Master Development Agreement

## Philips/Signify (Utility Metering, Energy Storage & Energy Management, IoT Reseller)

- NDA
- OEM Master Development Agreement (In negotiation)

## Vision Metering (Utility Metering Product Development, Component Reseller)

- NDA
- Development Agreement / PTCRB / Investment



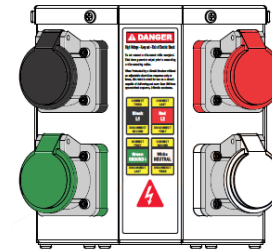
# Unique Offerings

## Products & Services

- Consulting
- Architecting Solutions with Customer
- Solution Designs, Leveraging Global / Regional Total Network Design
- RBS Complete Cabinets – Full NEBS, GR487, UL Certifications
- Integration and Acceptance
- Contract and Regulatory Compliance
- Integration & Test for Interoperability
- Solution Certification and Customer Acceptance
- Innovation / Development of Custom Solutions & Products



1RU AC Power Distribution Unit



Generator Interface Panels



Smart Light Poles



Dual Voltage Battery Cabinet



Equipment & Battery Cabinet



Equipment & Battery Cabinet



Wireless Utility Meter Data Collection

# AC Power Distribution Units

## 110VAC & 220VAC Versions Available

- 60A & 125A Main Breakers with Trip Alarm
- Ultra-thin 1RU and 1.5RU Component Height
- UL1077 & UL489 Rated Breakers with Full UL Product Certification
- Hot Swap Distribution Breakers for Easy Field Serviceability



Production units include the Amphenol Connector for utility AC power feed

Pre-wired distribution as specified by customer

Powder coated aluminum chassis

Optional technician snake light – ground fault

110VAC convenience outlet – ground fault protection

Field serviceable “Hot-Swap” plug-in breakers

50A main breaker with fault alarm sensing

# Utility Shadow Billing

## Data Collection Shadow Bill Process

- Utility Grade Meter Collects the Site Energy Consumption
- The Meter Sends Data to the Server Creating the Meter Read Report
- Server Calculates the kW Consumption Applying the Site Rate Tariff
- Each Month the Application Generates a Utility Grade Shadow Utility Bill
- Bill Payment Services – Utility Bill Scanning – Other Payment Services



**Meter Read Report**

Service Area: West Liberty

Address: 122 1/2 E Third St B

Read Value	Read Time	Serial #
144	5/2/2008 9:10:40 AM	4855 R5 +45
144	5/1/2008 9:09:28 PM	4855 R5 +45
144	5/1/2008 11:05:22 AM	4855 R5 +45
140	5/1/2008 9:10:35 AM	4855 R5 +45
139	4/30/2008 9:09:21 PM	4855 R5 +45
136	4/30/2008 9:09:20 AM	4855 R5 +45
132	4/29/2008 9:09:27 PM	4855 R5 +45
129	4/29/2008 9:09:17 AM	4855 R5 +45
122	4/28/2008 9:09:11 PM	4855 R5 +45
119	4/28/2008 9:09:14 AM	4855 R5 +45
113	4/27/2008 9:09:11 PM	4855 R5 +45
106	4/27/2008 9:09:10 AM	4855 R5 +45
101	4/26/2008 9:09:09 PM	4855 R5 +45
97	4/26/2008 9:09:06 AM	4855 R5 +45
90	4/25/2008 9:09:08 PM	4855 R5 +45
84	4/25/2008 9:09:01 AM	4855 R5 +45
77	4/24/2008 9:09:01 PM	4855 R5 +45
70	4/24/2008 9:08:59 AM	4855 R5 +45
64	4/23/2008 9:08:57 PM	4855 R5 +45
60	4/23/2008 9:08:56 AM	4855 R5 +45
55	4/22/2008 9:08:53 PM	4855 R5 +45
49	4/22/2008 9:08:54 AM	4855 R5 +45
44	4/21/2008 9:08:50 PM	4855 R5 +45
36	4/21/2008 9:08:49 AM	4855 R5 +45
31	4/20/2008 9:08:46 PM	4855 R5 +45
26	4/20/2008 9:08:45 AM	4855 R5 +45
21	4/19/2008 9:08:43 PM	4855 R5 +45
16	4/19/2008 9:08:41 AM	4855 R5 +45
12	4/18/2008 9:08:38 PM	4855 R5 +45
8	4/18/2008 9:08:37 AM	4855 R5 +45
4	4/17/2008 9:08:33 PM	4855 R5 +45

Address: 211 W Prairie St F

Read Value	Read Time	Serial #
130	5/2/2008 9:11:35 AM	4855 R5 +45
130	5/1/2008 9:20:24 PM	4855 R5 +45

**Rate Tariff**

THE WILKINSON ELECTRIC SERVICE DISTRICT

DATE SCHEDULES 2007

Commercial Public Service

Residential Public Service

Industrial Public Service

Electric Service for 01MAR08 to 31MAR08 (31 Days)

Electric Service for 01APR08 to 31APR08 (31 Days)

Electric Service for 01MAY08 to 31MAY08 (31 Days)

Electric Service for 01JUN08 to 30JUN08 (30 Days)

Electric Service for 01JUL08 to 31JUL08 (31 Days)

Electric Service for 01AUG08 to 31AUG08 (31 Days)

Electric Service for 01SEP08 to 30SEP08 (30 Days)

Electric Service for 01OCT08 to 31OCT08 (31 Days)

Electric Service for 01NOV08 to 30NOV08 (30 Days)

Electric Service for 01DEC08 to 31DEC08 (31 Days)

Electric Service for 01JAN09 to 31JAN09 (31 Days)

Electric Service for 01FEB09 to 28FEB09 (28 Days)

Electric Service for 01MAR09 to 31MAR09 (31 Days)

Electric Service for 01APR09 to 30APR09 (30 Days)

Electric Service for 01MAY09 to 31MAY09 (31 Days)

Electric Service for 01JUN09 to 30JUN09 (30 Days)

Electric Service for 01JUL09 to 31JUL09 (31 Days)

Electric Service for 01AUG09 to 31AUG09 (31 Days)

Electric Service for 01SEP09 to 30SEP09 (30 Days)

Electric Service for 01OCT09 to 31OCT09 (31 Days)

Electric Service for 01NOV09 to 30NOV09 (30 Days)

Electric Service for 01DEC09 to 31DEC09 (31 Days)

Electric Service for 01JAN10 to 31JAN10 (31 Days)

Electric Service for 01FEB10 to 28FEB10 (28 Days)

Electric Service for 01MAR10 to 31MAR10 (31 Days)

Electric Service for 01APR10 to 30APR10 (30 Days)

Electric Service for 01MAY10 to 31MAY10 (31 Days)

Electric Service for 01JUN10 to 30JUN10 (30 Days)

Electric Service for 01JUL10 to 31JUL10 (31 Days)

Electric Service for 01AUG10 to 31AUG10 (31 Days)

Electric Service for 01SEP10 to 30SEP10 (30 Days)

Electric Service for 01OCT10 to 31OCT10 (31 Days)

Electric Service for 01NOV10 to 30NOV10 (30 Days)

Electric Service for 01DEC10 to 31DEC10 (31 Days)

Electric Service for 01JAN11 to 31JAN11 (31 Days)

Electric Service for 01FEB11 to 28FEB11 (28 Days)

Electric Service for 01MAR11 to 31MAR11 (31 Days)

Electric Service for 01APR11 to 30APR11 (30 Days)

Electric Service for 01MAY11 to 31MAY11 (31 Days)

Electric Service for 01JUN11 to 30JUN11 (30 Days)

Electric Service for 01JUL11 to 31JUL11 (31 Days)

Electric Service for 01AUG11 to 31AUG11 (31 Days)

Electric Service for 01SEP11 to 30SEP11 (30 Days)

Electric Service for 01OCT11 to 31OCT11 (31 Days)

Electric Service for 01NOV11 to 30NOV11 (30 Days)

Electric Service for 01DEC11 to 31DEC11 (31 Days)

Electric Service for 01JAN12 to 31JAN12 (31 Days)

Electric Service for 01FEB12 to 28FEB12 (28 Days)

Electric Service for 01MAR12 to 31MAR12 (31 Days)

Electric Service for 01APR12 to 30APR12 (30 Days)

Electric Service for 01MAY12 to 31MAY12 (31 Days)

Electric Service for 01JUN12 to 30JUN12 (30 Days)

Electric Service for 01JUL12 to 31JUL12 (31 Days)

Electric Service for 01AUG12 to 31AUG12 (31 Days)

Electric Service for 01SEP12 to 30SEP12 (30 Days)

Electric Service for 01OCT12 to 31OCT12 (31 Days)

Electric Service for 01NOV12 to 30NOV12 (30 Days)

Electric Service for 01DEC12 to 31DEC12 (31 Days)

Electric Service for 01JAN13 to 31JAN13 (31 Days)

Electric Service for 01FEB13 to 28FEB13 (28 Days)

Electric Service for 01MAR13 to 31MAR13 (31 Days)

Electric Service for 01APR13 to 30APR13 (30 Days)

Electric Service for 01MAY13 to 31MAY13 (31 Days)

Electric Service for 01JUN13 to 30JUN13 (30 Days)

Electric Service for 01JUL13 to 31JUL13 (31 Days)

Electric Service for 01AUG13 to 31AUG13 (31 Days)

Electric Service for 01SEP13 to 30SEP13 (30 Days)

Electric Service for 01OCT13 to 31OCT13 (31 Days)

Electric Service for 01NOV13 to 30NOV13 (30 Days)

Electric Service for 01DEC13 to 31DEC13 (31 Days)

Electric Service for 01JAN14 to 31JAN14 (31 Days)

Electric Service for 01FEB14 to 28FEB14 (28 Days)

Electric Service for 01MAR14 to 31MAR14 (31 Days)

Electric Service for 01APR14 to 30APR14 (30 Days)

Electric Service for 01MAY14 to 31MAY14 (31 Days)

Electric Service for 01JUN14 to 30JUN14 (30 Days)

Electric Service for 01JUL14 to 31JUL14 (31 Days)

Electric Service for 01AUG14 to 31AUG14 (31 Days)

Electric Service for 01SEP14 to 30SEP14 (30 Days)

Electric Service for 01OCT14 to 31OCT14 (31 Days)

Electric Service for 01NOV14 to 30NOV14 (30 Days)

Electric Service for 01DEC14 to 31DEC14 (31 Days)

Electric Service for 01JAN15 to 31JAN15 (31 Days)

Electric Service for 01FEB15 to 28FEB15 (28 Days)

Electric Service for 01MAR15 to 31MAR15 (31 Days)

Electric Service for 01APR15 to 30APR15 (30 Days)

Electric Service for 01MAY15 to 31MAY15 (31 Days)

Electric Service for 01JUN15 to 30JUN15 (30 Days)

Electric Service for 01JUL15 to 31JUL15 (31 Days)

Electric Service for 01AUG15 to 31AUG15 (31 Days)

Electric Service for 01SEP15 to 30SEP15 (30 Days)

Electric Service for 01OCT15 to 31OCT15 (31 Days)

Electric Service for 01NOV15 to 30NOV15 (30 Days)

Electric Service for 01DEC15 to 31DEC15 (31 Days)

Electric Service for 01JAN16 to 31JAN16 (31 Days)

Electric Service for 01FEB16 to 28FEB16 (28 Days)

Electric Service for 01MAR16 to 31MAR16 (31 Days)

Electric Service for 01APR16 to 30APR16 (30 Days)

Electric Service for 01MAY16 to 31MAY16 (31 Days)

Electric Service for 01JUN16 to 30JUN16 (30 Days)

Electric Service for 01JUL16 to 31JUL16 (31 Days)

Electric Service for 01AUG16 to 31AUG16 (31 Days)

Electric Service for 01SEP16 to 30SEP16 (30 Days)

Electric Service for 01OCT16 to 31OCT16 (31 Days)

Electric Service for 01NOV16 to 30NOV16 (30 Days)

Electric Service for 01DEC16 to 31DEC16 (31 Days)

Electric Service for 01JAN17 to 31JAN17 (31 Days)

Electric Service for 01FEB17 to 28FEB17 (28 Days)

Electric Service for 01MAR17 to 31MAR17 (31 Days)

Electric Service for 01APR17 to 30APR17 (30 Days)

Electric Service for 01MAY17 to 31MAY17 (31 Days)

Electric Service for 01JUN17 to 30JUN17 (30 Days)

Electric Service for 01JUL17 to 31JUL17 (31 Days)

Electric Service for 01AUG17 to 31AUG17 (31 Days)

Electric Service for 01SEP17 to 30SEP17 (30 Days)

Electric Service for 01OCT17 to 31OCT17 (31 Days)

Electric Service for 01NOV17 to 30NOV17 (30 Days)

Electric Service for 01DEC17 to 31DEC17 (31 Days)

Electric Service for 01JAN18 to 31JAN18 (31 Days)

Electric Service for 01FEB18 to 28FEB18 (28 Days)

Electric Service for 01MAR18 to 31MAR18 (31 Days)

Electric Service for 01APR18 to 30APR18 (30 Days)

Electric Service for 01MAY18 to 31MAY18 (31 Days)

Electric Service for 01JUN18 to 30JUN18 (30 Days)

Electric Service for 01JUL18 to 31JUL18 (31 Days)

Electric Service for 01AUG18 to 31AUG18 (31 Days)

Electric Service for 01SEP18 to 30SEP18 (30 Days)

Electric Service for 01OCT18 to 31OCT18 (31 Days)

Electric Service for 01NOV18 to 30NOV18 (30 Days)

Electric Service for 01DEC18 to 31DEC18 (31 Days)

Electric Service for 01JAN19 to 31JAN19 (31 Days)

Electric Service for 01FEB19 to 28FEB19 (28 Days)

Electric Service for 01MAR19 to 31MAR19 (31 Days)

Electric Service for 01APR19 to 30APR19 (30 Days)

Electric Service for 01MAY19 to 31MAY19 (31 Days)

Electric Service for 01JUN19 to 30JUN19 (30 Days)

Electric Service for 01JUL19 to 31JUL19 (31 Days)

Electric Service for 01AUG19 to 31AUG19 (31 Days)

Electric Service for 01SEP19 to 30SEP19 (30 Days)

Electric Service for 01OCT19 to 31OCT19 (31 Days)

Electric Service for 01NOV19 to 30NOV19 (30 Days)

Electric Service for 01DEC19 to 31DEC19 (31 Days)

Electric Service for 01JAN20 to 31JAN20 (31 Days)

Electric Service for 01FEB20 to 28FEB20 (28 Days)

Electric Service for 01MAR20 to 31MAR20 (31 Days)

Electric Service for 01APR20 to 30APR20 (30 Days)

Electric Service for 01MAY20 to 31MAY20 (31 Days)

Electric Service for 01JUN20 to 30JUN20 (30 Days)

Electric Service for 01JUL20 to 31JUL20 (31 Days)

Electric Service for 01AUG20 to 31AUG20 (31 Days)

Electric Service for 01SEP20 to 30SEP20 (30 Days)

Electric Service for 01OCT20 to 31OCT20 (31 Days)

Electric Service for 01NOV20 to 30NOV20 (30 Days)

Electric Service for 01DEC20 to 31DEC20 (31 Days)

Electric Service for 01JAN21 to 31JAN21 (31 Days)

Electric Service for 01FEB21 to 28FEB21 (28 Days)

Electric Service for 01MAR21 to 31MAR21 (31 Days)

Electric Service for 01APR21 to 30APR21 (30 Days)

Electric Service for 01MAY21 to 31MAY21 (31 Days)

Electric Service for 01JUN21 to 30JUN21 (30 Days)

Electric Service for 01JUL21 to 31JUL21 (31 Days)

Electric Service for 01AUG21 to 31AUG21 (31 Days)

Electric Service for 01SEP21 to 30SEP21 (30 Days)

Electric Service for 01OCT21 to 31OCT21 (31 Days)

Electric Service for 01NOV21 to 30NOV21 (30 Days)

Electric Service for 01DEC21 to 31DEC21 (31 Days)

Electric Service for 01JAN22 to 31JAN22 (31 Days)

Electric Service for 01FEB22 to 28FEB22 (28 Days)

Electric Service for 01MAR22 to 31MAR22 (31 Days)

Electric Service for 01APR22 to 30APR22 (30 Days)

Electric Service for 01MAY22 to 31MAY22 (31 Days)

Electric Service for 01JUN22 to 30JUN22 (30 Days)

Electric Service for 01JUL22 to 31JUL22 (31 Days)

Electric Service for 01AUG22 to 31AUG22 (31 Days)

Electric Service for 01SEP22 to 30SEP22 (30 Days)

Electric Service for 01OCT22 to 31OCT22 (31 Days)

Electric Service for 01NOV22 to 30NOV22 (30 Days)

Electric Service for 01DEC22 to 31DEC22 (31 Days)

Electric Service for 01JAN23 to 31JAN23 (31 Days)

Electric Service for 01FEB23 to 28FEB23 (28 Days)

Electric Service for 01MAR23 to 31MAR23 (31 Days)

Electric Service for 01APR23 to 30APR23 (30 Days)

Electric Service for 01MAY23 to 31MAY23 (31 Days)

Electric Service for 01JUN23 to 30JUN23 (30 Days)

Electric Service for 01JUL23 to 31JUL23 (31 Days)

Electric Service for 01AUG23 to 31AUG23 (31 Days)

Electric Service for 01SEP23 to 30SEP23 (30 Days)

Electric Service for 01OCT23 to 31OCT23 (31 Days)

Electric Service for 01NOV23 to 30NOV23 (30 Days)

Electric Service for 01DEC23 to 31DEC23 (31 Days)

Electric Service for 01JAN24 to 31JAN24 (31 Days)

Electric Service for 01FEB24 to 28FEB24 (28 Days)

Electric Service for 01MAR24 to 31MAR24 (31 Days)

Electric Service for 01APR24 to 30APR24 (30 Days)

Electric Service for 01MAY24 to 31MAY24 (31 Days)

Electric Service for 01JUN24 to 30JUN24 (30 Days)

Electric Service for 01JUL24 to 31JUL24 (31 Days)

Electric Service for 01AUG24 to 31AUG24 (31 Days)

Electric Service for 01SEP24 to 30SEP24 (30 Days)

Electric Service for 01OCT24 to 31OCT24 (31 Days)

Electric Service for 01NOV24 to 30NOV24 (30 Days)

Electric Service for 01DEC24 to 31DEC24 (31 Days)

Electric Service for 01JAN25 to 31JAN25 (31 Days)

Electric Service for 01FEB25 to 28FEB25 (28 Days)

Electric Service for 01MAR25 to 31MAR25 (31 Days)

Electric Service for 01APR25 to 30APR25 (30 Days)

Electric Service for 01MAY25 to 31MAY25 (31 Days)

Electric Service for 01JUN25 to 30JUN25 (30 Days)

Electric Service for 01JUL25 to 31JUL25 (31 Days)

Electric Service for 01AUG25 to 31AUG25 (31 Days)

Electric Service for 01SEP25 to 30SEP25 (30 Days)

Electric Service for 01OCT25 to 31OCT25 (31 Days)

Electric Service for 01NOV25 to 30NOV25 (30 Days)

Electric Service for 01DEC25 to 31DEC25 (31 Days)

Electric Service for 01JAN26 to 31JAN26 (31 Days)

Electric Service for 01FEB26 to 28FEB26 (28 Days)

Electric Service for 01MAR26 to 31MAR26 (31 Days)

Electric Service for 01APR26 to 30APR26 (30 Days)

Electric Service for 01MAY26 to 31MAY26 (31 Days)

Electric Service for 01JUN26 to 30JUN26 (30 Days)

Electric Service for 01JUL26 to 31JUL26 (31 Days)

Electric Service for 01AUG26 to 31AUG26 (31 Days)

Electric Service for 01SEP26 to 30SEP26 (30 Days)

Electric Service for 01OCT26 to 31OCT26 (31 Days)

Electric Service for 01NOV26 to 30NOV26 (30 Days)

Electric Service for 01DEC26 to 31DEC26 (31 Days)

Electric Service for 01JAN27 to 31JAN27 (31 Days)

Electric Service for 01FEB27 to 28FEB27 (28 Days)

Electric Service for 01MAR27 to 31MAR27 (31 Days)

Electric Service for 01APR27 to 30APR27 (30 Days)

Electric Service for 01MAY27 to 31MAY27 (31 Days)

Electric Service for 01JUN27 to 30JUN27 (30 Days)

Electric Service for 01JUL27 to 31JUL27 (31 Days)

Electric Service for 01AUG27 to 31AUG27 (31 Days)

Electric Service for 01SEP27 to 30SEP27 (30 Days)

Electric Service for 01OCT27 to 31OCT27 (31 Days)

Electric Service for 01NOV27 to 30NOV27 (30 Days)

Electric Service for 01DEC27 to 31DEC27 (31 Days)

Electric Service for 01JAN28 to 31JAN28 (31 Days)

Electric Service for 01FEB28 to 28FEB28 (28 Days)

Electric Service for 01MAR28 to 31MAR28 (31 Days)

Electric Service for 01APR28 to 30APR28 (30 Days)

Electric Service for 01MAY28 to 31MAY28 (31 Days)

Electric Service for 01JUN28 to 30JUN28 (30 Days)

Electric Service for 01JUL28 to 31JUL28 (31 Days)

Electric Service for 01AUG28 to 31AUG28 (31 Days)

Electric Service for 01SEP28 to 30SEP28 (30 Days)

Electric Service for 01OCT28 to 31OCT28 (31 Days)

Electric Service for 01NOV28 to 30NOV28 (30 Days)

Electric Service for 01DEC28 to 31DEC28 (31 Days)

Electric Service for 01JAN29 to 31JAN29 (31 Days)

Electric Service for 01FEB29 to 28FEB29 (28 Days)

Electric Service for 01MAR29 to 31MAR29 (31 Days)

Electric Service for 01APR29 to 30APR29 (30 Days)

Electric Service for 01MAY29 to 31MAY29 (31 Days)

Electric Service for 01JUN29 to 30JUN29 (30 Days)

Electric Service for 01JUL29 to 31JUL29 (31 Days)

Electric Service for 01AUG29 to 31AUG29 (31 Days)

Electric Service for 01SEP29 to 30SEP29 (30 Days)

Electric Service for 01OCT29 to 31OCT29 (31 Days)

Electric Service for 01NOV29 to 30NOV29 (30 Days)

Electric Service for 01DEC29 to 31DEC29 (31 Days)

Electric Service for 01JAN30 to 31JAN30 (31 Days)

Electric Service for 01FEB30 to 28FEB30 (28 Days)

Electric Service for 01MAR30 to 31MAR30 (31 Days)

Electric Service for 01APR30 to 30APR30 (30 Days)

Electric Service for 01MAY30 to 31MAY30 (31 Days)

Electric Service for 01JUN30 to 30JUN30 (30 Days)

Electric Service for 01JUL30 to 31JUL30 (31 Days)

Electric Service for 01AUG30 to 31AUG30 (31 Days)

Electric Service for 01SEP30 to 30SEP30 (30 Days)

Electric Service for 01OCT30 to 31OCT30 (31 Days)

Electric Service for 01NOV30 to 30NOV30 (30 Days)

Electric Service for 01DEC30 to 31DEC30 (31 Days)

Electric Service for 01JAN31 to 31JAN31 (31 Days)

Electric Service for 01FEB31 to 28FEB31 (28 Days)

Electric Service for 01MAR31 to 31MAR31 (31 Days)

Electric Service for 01APR31 to 30APR31 (30 Days)

Electric Service for 01MAY31 to 31MAY31 (31 Days)

Electric Service for 01JUN31 to 30JUN31 (30 Days)

Electric Service for 01JUL31 to 31JUL31 (31 Days)

Electric Service for 01AUG31 to 31AUG31 (31 Days)

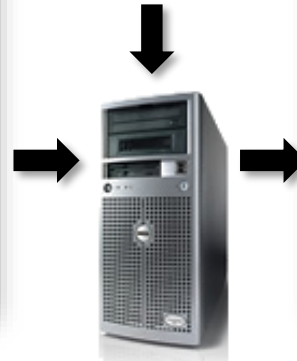
Electric Service for 01SEP31 to 30SEP31 (30 Days)

Electric Service for 01OCT31 to 31OCT31 (31 Days)

Electric Service for 01NOV31 to 30NOV31 (30 Days)

Electric Service for 01DEC31 to 31DEC31 (31 Days)

Rate Tariff



**Shadow Billing**

Sprint  
Together with NETUS  
Shadow Metering

Payment to:

DATE	AMOUNT DUE
4/15/2008	\$765.07

ACCOUNT / METER NUMBER  
1105-534-008

UTILITY COMPANY NAME  
COMMONWEALTH EDISON

UTILITY RATE TABLE  
AS-L

Billing Summary

Previous Balance	3/28/2008	5530.34	Monthly Energy Usage	This Year	Last Year
Previous Payment	3/15/2008	5530.34	Average Electric User Per Day	147.13 kWh	130.82 kWh
Balance As Of	3/23/2008	50.00	Average Electric Cost Per Day	\$26.18	\$19.23
Current Energy Charge		\$765.07	Average Temperature	28F	34F
Total Amount Due		\$765.07			

Messages:

Sprint Customer support is available between 8:00 AM and 5:00 PM during normal business hours at: (703) 993-5675.  
Technical Support: to report billing errors or questions about your bill call during normal business hours, call Centra Technologies, Inc. at (256) 704-0422 or visit "www.centra.com".

Electric Service for 01MAR08 to 31MAR08 (31 Days)

Heating Degree Days	1,112	Commercial Electric Service	
Cooling Degree Days	0	Facility Charge	\$7.75
Meter Number	45822928	Non-Taxable Charge	\$2.97
Actual Reading = 31MAR08	21688	Energy (kWh) kWh = 1.387630 kWh	\$85.78
Actual Reading = 31MAR08	17124	Point Batch Credits	\$101.43 CR
Total Electricity Used	4861 kWh	Total Electric Charges	\$765.07
Next Scheduled Meter Reading Date	30APR08		

Contact Us Anytime

Sprint Customer Service: (703) 993-5675  
Metering Technical Support: (256) 704-0422  
Billing/Payment Services: (816) 459-7227

# Capabilities



## What Makes Our Products Unique

- Concept Design and Modeling
  - 2D / 3D
- Enclosure Design
  - IPR design and ownership (Collapsible Cabinet)
  - 3PP adaptation (i.e.. DVBBM-ALM, PDU)
- Metal Part Design
  - Ground Bar systems
  - Equipment mounting solutions
  - Air blockers, Battery vent kits, Seismic kits, etc..
- Cable Design
  - Power cables and assemblies including Hybrid
  - Signal / Alarm cables and assemblies
  - RF cables and assemblies
- Carrier Certification Pre-Approval
  - Strong knowledge of carrier GR-487, UL, ETL requirements
  - Preparation of test parameter documents for pre-approval by carrier
  - Package and process from start to finish GR & UL / ETL
  - Gain carrier signoff and product release with onboarding into carrier order process

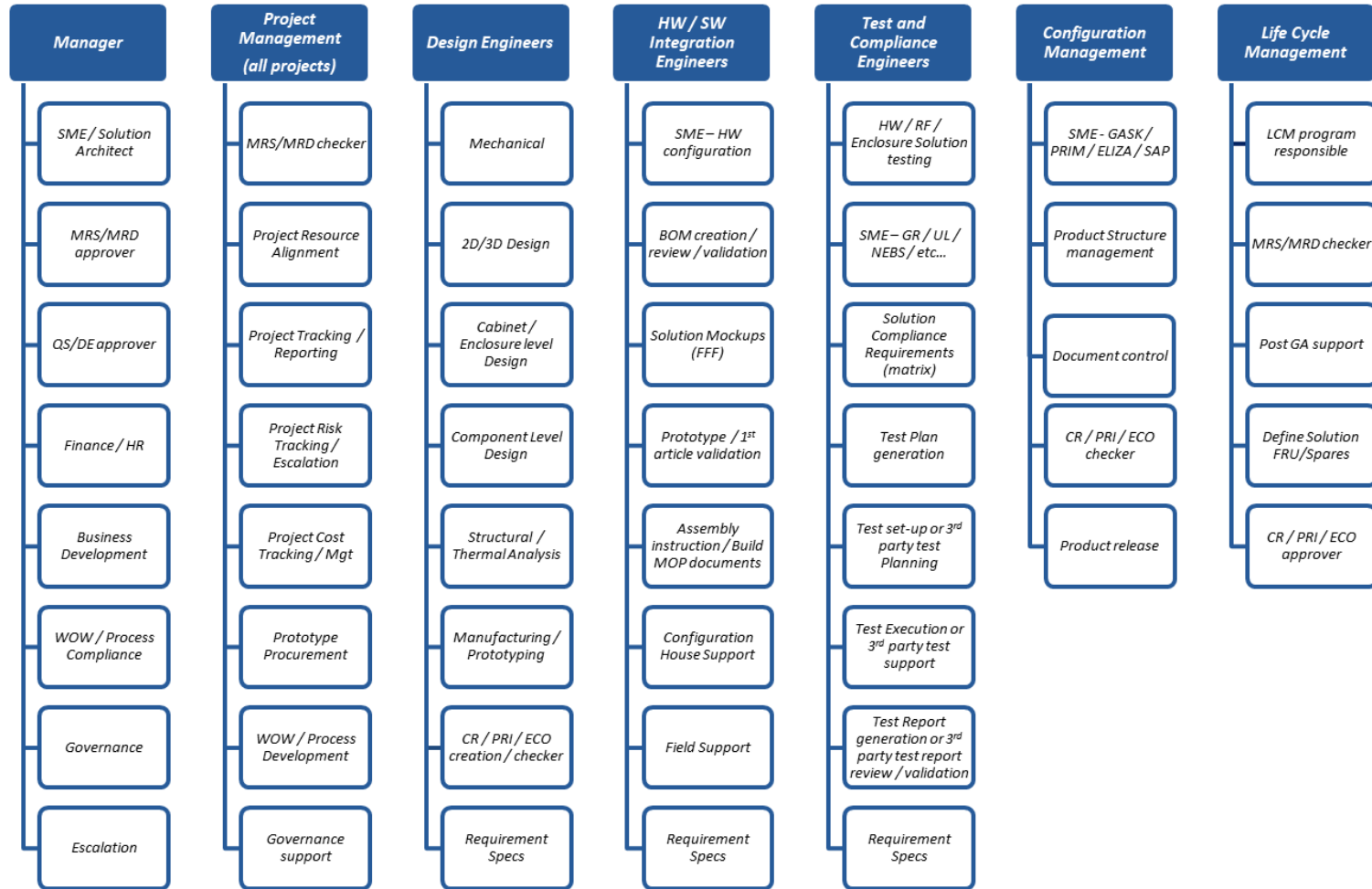


# Competencies

<b>1</b> Radio Access Products	<b>2</b> Transport Products	<b>3</b> Power / Backup Products	<b>4</b> Design	<b>5</b> Thermal Analysis
<ul style="list-style-type: none"><li>• RBS</li><li>• Radio</li><li>• Antenna</li><li>• RF Systems</li></ul>	<ul style="list-style-type: none"><li>• Site Routers</li><li>• Microwave</li><li>• OFD</li><li>• CWDM</li></ul>	<ul style="list-style-type: none"><li>• AC / DC systems</li><li>• Battery backup</li><li>• Fuel Cell / Hybrid systems</li></ul>	<ul style="list-style-type: none"><li>• Mechanical</li><li>• Electrical</li></ul>	<ul style="list-style-type: none"><li>• Power modeling</li><li>• Heat dissipation modeling</li><li>• Cooling system validation / improvements</li></ul>
<b>6</b> Compliance & Regulatory	<b>7</b> Hardware Integration	<b>8</b> Configuration Management	<b>9</b> Life Cycle Management	<b>10</b> Support
<ul style="list-style-type: none"><li>• Telcordia Standards</li><li>• UL / ETL</li><li>• EMI / EMC</li><li>• NEBS / GR487</li></ul>	<ul style="list-style-type: none"><li>• Mock-ups</li><li>• FFF</li><li>• Assembly Docs</li><li>• FOA/FFA support</li></ul>	<ul style="list-style-type: none"><li>• PDM</li><li>• Product Structure Mgt.</li><li>• PRIM/GASK</li><li>• ELIZA</li><li>• SAP</li></ul>	<ul style="list-style-type: none"><li>• Post GA support</li><li>• Product mgt.</li><li>• FRU / Spares mgt.</li><li>• CR / PRI / ECO</li></ul>	<ul style="list-style-type: none"><li>• Documentation</li><li>• Field Upgrade MOPs</li><li>• On-site</li><li>• Remote</li></ul>



# Engineering and Support Overview



# Contact Information

## MSF Data Services, Inc.

**Manufactured in Allen, TX**

GR487 Tested at NTS Laboratories – Plano, TX

Designed and manufactured in USA

[www.msfds.com](http://www.msfds.com)

**For Sales Support (US and Canada)**

Tel: (414) 349-5454 – Brian Magnus

[bmagnus@msfds.com](mailto:bmagnus@msfds.com)

**For Technical Support (US and Canada):**

Tel: (800) 890-6889

Fax: (262) 565-2048

[Support@msfds.com](mailto:Support@msfds.com)

**Sales Support email:**

[sales@msfds.com](mailto:sales@msfds.com)

**Sales Ordering email:**

[orders@msfds.com](mailto:orders@msfds.com)

