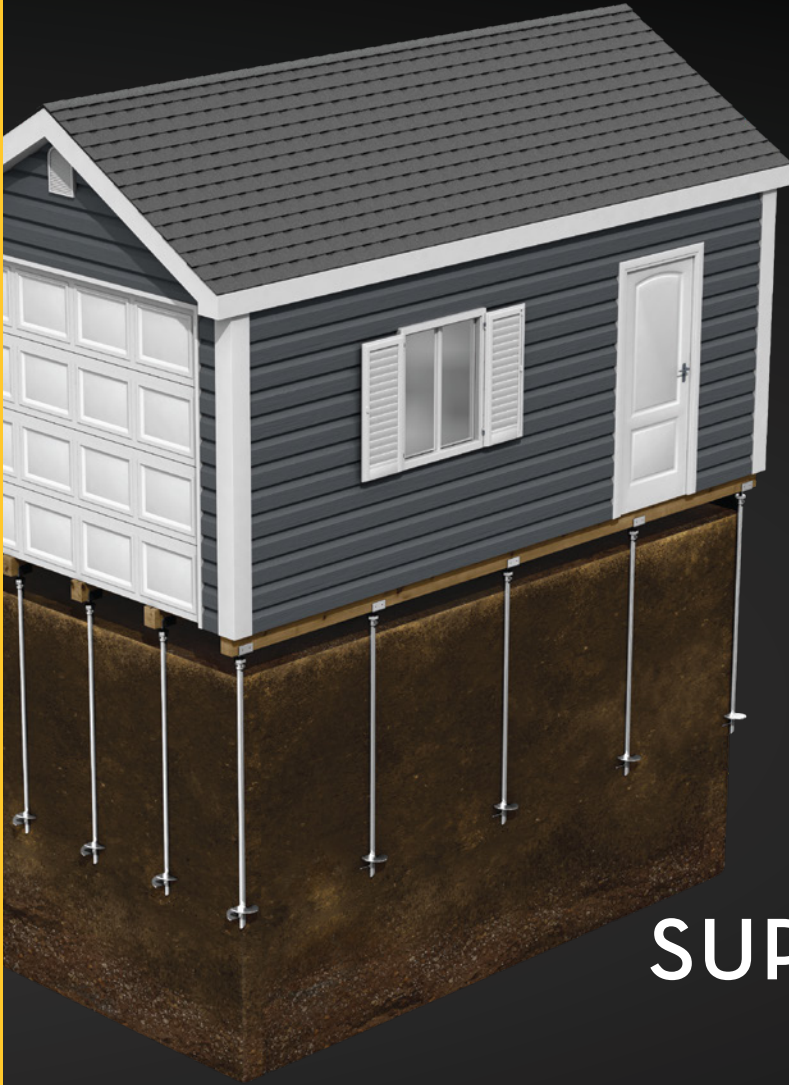


SHEDS

GOLIATH **TECH**

SCREW PILE SYSTEM



HELICAL PILE SUPPORT SYSTEM FOR SHEDS

MAKE THE
CONNECTION!



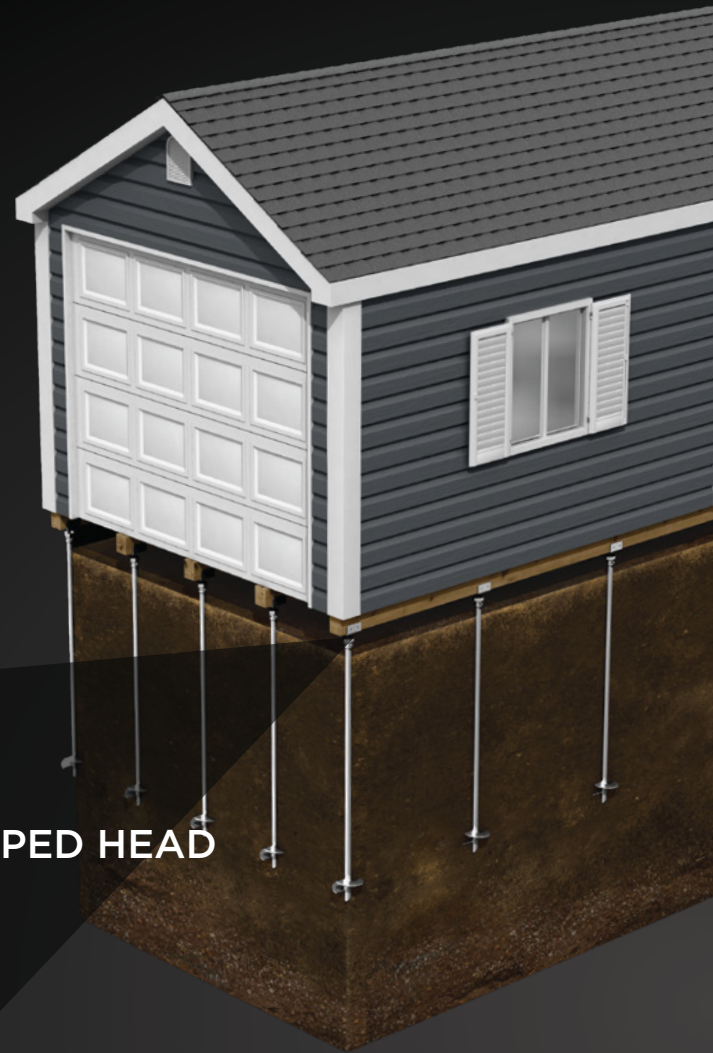
ISO 9001:2015 CERTIFIED
ISO 14001:2015 ENVIRONMENTAL CERTIFIED
ICC-ES ESR-3726
AWS D1.1 / CWB CERTIFIED
CCMC CERTIFIED #13675-R
ACQ & CA COMPLIANT

EXCLUSIVE ANCHORING SOLUTIONS

SOLIDLY ANCHORED SHEDS

When used to anchor a shed, helical piles guarantee a more solid, secure, and built-to-last structure. Not only are they easier and quicker to install than concrete footings, helical piles offer more durable support for the shed over the long term, in any soil or weather condition.

Screw piles require no dry time, unlike concrete, meaning shed construction can begin immediately. Plus, GoliathTech screw piles are installed using small equipment that leaves no damage to the yard — perfect for backyards where space can be tight.



U-SHAPED HEAD

SOLID ENGINEERING PREVENTS MOVEMENT

Our screw piles are installed as deep as necessary to reach stable soil, in order to stabilize even the largest and heaviest-load sheds, in any environmental condition or soil type:

- Cohesive and cohesionless soil
- Boggy or waterlogged soil
- Silt, sand or clay

INSTALLATION IN HOURS **USING SMALL EQUIPMENT**

- ✓ NO CONCRETE DELAYS OR DRY TIME
- ✓ NO MESS
- ✓ NO SOIL DISPLACEMENT OR REMOVAL
- ✓ NO WEATHER DELAYS
- ✓ REMOVABLE AND REUSABLE

PATENTED
LEVELLING
SUPPORT
SOLUTION

1

2

QUALITY ENGINEERING

1 U-SHAPED HEAD

2 MAKE THE CONNECTION!
STRONG & SECURE BOLTED HEAD CONNECTION

3 EXTENSIONS HELP REACH STABLE SOIL

4 GALVANIZING PROCESS PROTECTS
STEEL AGAINST CORROSION

3

4

A shed could require from six to more than 16 screw piles, depending on size and weight, each rod 1 7/8 inches in diameter. The piles have adjustable heads that allow the installer to reach deep into stable soil, and offer optimal compression and tension performance. Our precise engineering and installation method ensures that over time the shed will remain stable.

ADJUSTABLE & FLEXIBLE SOLUTIONS

- Contractor can adapt solution to fit each installation
- Calibrated torque-reading equipment ensures precise fit
- Height-adjustable to reach optimum soil

Polyurethane prevents
freezing ground
around helix and stops
winter heaving

60 ksi
galvanized
steel

COMPRESSION & TENSION HANDLING

- Industry-leading rod and pile compression resistance
- Extension and mounting bolts feature high shear capacity
- Superior load-bearing capacity
- High tension handling to prevent shed uplift and shearing

DURABILITY & ENVIRONMENTAL RESISTANCE

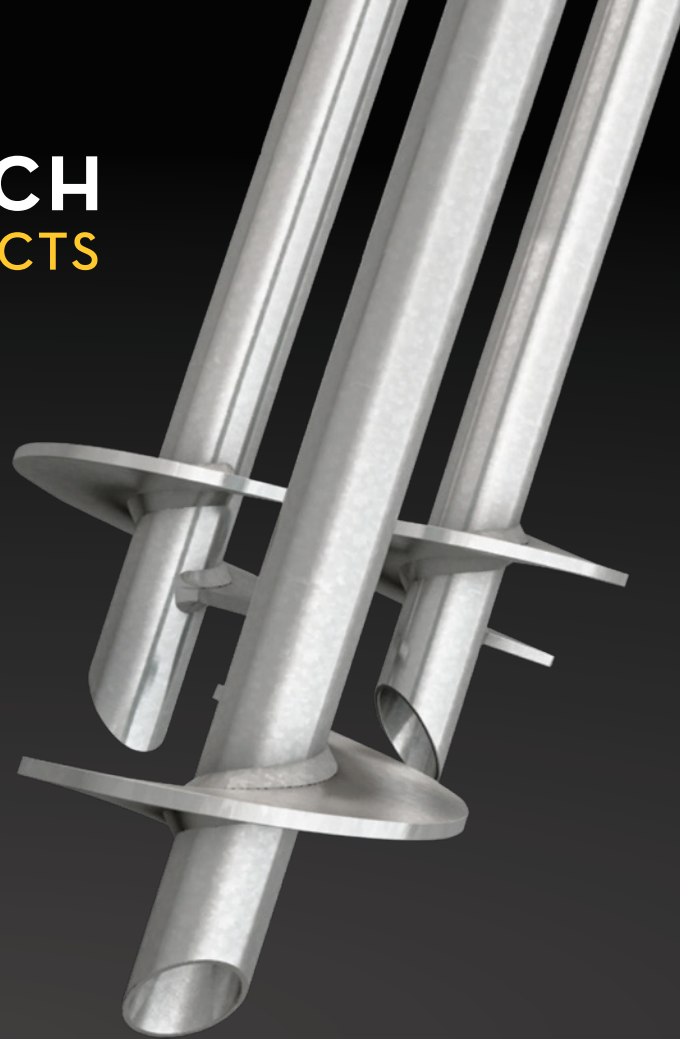
- Performance in cohesive & cohesionless soil
- Fights frost and thawing soil movements from the inside out
- Polyurethane core prevents freezing ground around helix
- Prevents lateral or vertical movement of shed

8- to 17-inch diameter
and 3-inch pitch



WE ARE GOLIATHTECH

THE PILLARS OF YOUR PROJECTS



GOLIATHTECH'S INSTALLATION PROMISE

Our network of certified installers put their vast experience to work to guarantee optimal anchoring of each pile.

Because the quality of an installation is as important as the quality of the piles, all GoliathTech installers have received training at our factory and are certified technicians on the installation of our products.

Installers use mini excavators equipped with our proprietary calibrated torque-reading equipment, which allows them to determine the exact tension and compression values on each site. Their expertise ensures that the screw piles and the supported structure are built to last.

**BACKED BY THE GOLIATHTECH
PROMISE, GUARANTEED!**

QUITE SIMPLY SUPERIOR.

For more information on our products
or to find a certified GoliathTech
installer, please contact us:

TOLL FREE: 1.855.743.4777
INFO@GOLIATHTECHPILES.COM

WWW.GOLIATHTECHPILES.COM



CCMC

ACQ

CA