

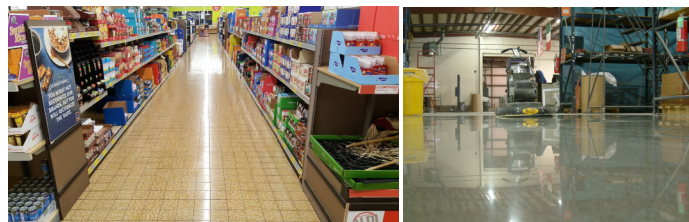
# The Most Revolutionary Floor Coating EVER!

*Introducing Liquid Glass - the floor coating that air-cures into a crystal clear flexible glass with superior traction, durability & adjustable gloss*



**Dries in 10-minutes!**

*Adjustable gloss: wet look shine to matte*



## Product Description

**Now available - CleanSmart's Liquid Glass Nano Floor Protector!** An ultra durable silica-based protective floor coating that offers unique benefits: reduces slip falls with a superior coefficient of friction (0.78-0.91) wet or dry; environmental - reduces use of water, chemicals, labor and electric; virtually eliminates stripping/waxing and daily buffing and scrubbing; resists heavy scratches from sand and dirt; dramatically improves floor appearance while reducing maintenance labor & materials to maintain facilities. Dries in 10 min. or less. Resume light traffic in less than an hour.

**Application directions:** Easy to apply! Spray liquid glass with trigger bottle onto a CleanSmart nano applicator pad until damp; then spray onto floor. Spread onto floor with microfiber applicator leaving a very thin, even coat.

**NOTE: only use a new microfiber applicator, not a laundered microfiber applicator to apply.**

**IMPORTANT:** Apply as thin as possible without leaving streaks. Floors with grain or pattern-apply with the grain. Other floors: apply in cross hatch method (each coat applied at a 90 degree angle to the last-like a checkerboard pattern). Apply 1-4 coats on top of clean sealed surfaces such as acrylic finish, urethane, epoxy, polished concrete guard, primer or ceramic tile/grout. If in doubt, apply 1 or more coats of CleanSmart Nano Floor Protector or CleanSmart All Surface Primer to properly prepared surface. To enhance gloss, buff with a CleanSmart Image pad 30 minutes or longer after last coat is dry. **DO NOT ATTEMPT TO APPLY LIQUID GLASS IF YOU HAVE NOT RECEIVED PROPER APPLICATION INSTRUCTIONS. THIS IS A SEMI-PERMANENT HIGH PERFORMANCE COATING!**

**Applications:** ♦VCT ♦LVT ♦Terrazzo ♦Concrete  
♦Marble ♦Wood ♦Rubber ♦Ceramic

Maintain with CleanSmart Enviro-Pro Cleaner per directions. Use of proper chair and table protectors, entrance mats and managing soils by vacuuming, dust mopping and other forms of soil extraction will determine how well the coating performs. It will also determine the frequency of buffing, honing and re-coating. Autoscrubbers with CleanSmart white, red or microfiber pads are best to maintain floors since they apply clean solution and vacuum up soil and sand. When coating needs to be refreshed, scrub clean and dry buff with appropriate pad if needed to adjust gloss. Re-coat as needed when coating is worn and repeat.

**Adjust gloss:** it is recommended after 3 days or more to diamond buff Liquid Glass, but not necessary: for high gloss floors, high speed buff (1000-2500 rpm)with CleanSmart diamond 10,000 grit pad. for satin floors light buff with 800-grit diamond pad 175-320 rpm.

## Specifications

- ♦ **Slip Coefficient:** (0.78-0.91) wet or dry
- ♦ **Substrate Bonding:** molecular bond vs. sacrificial coatings
- ♦ **Color:** sand - dries clear
- ♦ **Coverage rate:** 5,000'-10,000' /gallon per coat
- ♦ **Dry Time:** 10 minutes
- ♦ **Initial Cure/Light Traffic:** 1 hour
- ♦ **Full Cure:** 72 hours
- ♦ **Removeable:** use proper CleanSmart stripper

*Distributed By*



**Cleansmart Products and Services**  
**908-755-0316; Fax: 732-399-9346**  
**www.cleansmart.com**