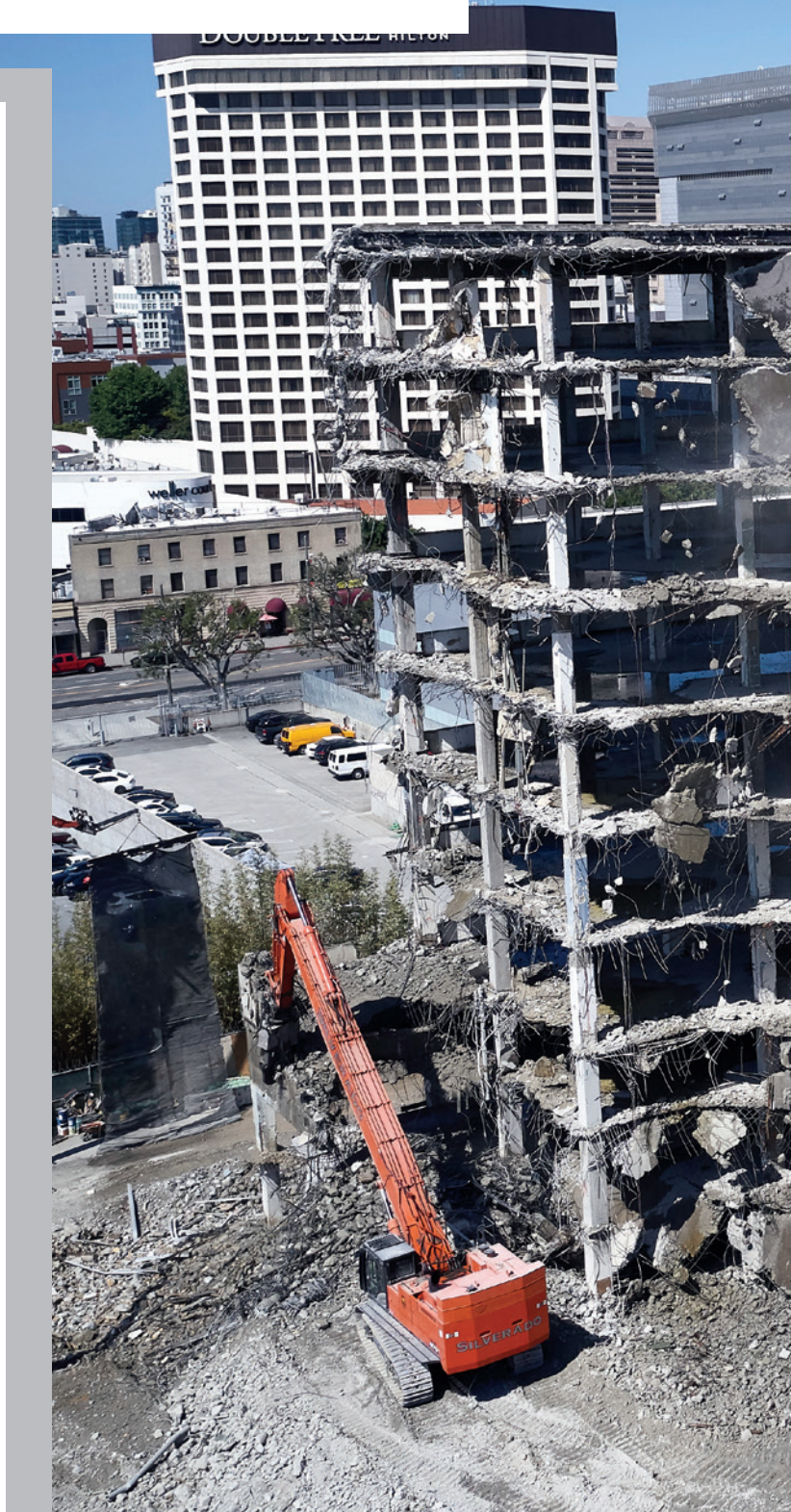




SILVERADO CONTRACTORS

The Parker Center served as the Los Angeles Police Department headquarters from 1955 through most of 2009. It was located in downtown Los Angeles and renamed in 1966 after former LAPD chief William H. Parker. Referred to as “The Glass House,” the eight-story structure was designed by architect Welton Becket, whose firm also designed the Beverly Hilton Hotel and the Capitol Records Building. Parker Center was built at the cost of \$6.1 million (\$58 million in today’s dollars) to be the finest and most modern police headquarters structure in the world. After nearly 60 years of use, the building became outdated and in need of expensive seismic retrofits. After being vacant for 13 years, the City of Los Angeles decided to raze the building in favor of a new 27-story high-rise that will eventually house city employees and services that are currently located throughout several buildings. The new 27-story office tower will be approximately 450 feet in height, with just over 750,000 square feet of government office space, 65,000 square feet of ground floor commercial space and subterranean parking for approximately 1,200 vehicles. It is expected to house about 3,200 city employees.

Silverado Contractors was awarded the \$18 million contract to demolish the building. The notice to proceed was given on June 18, 2018. Silverado Contractors has been involved in a long list of demolition projects, including the Bay Bridge, Candlestick Park and the Sixth Street Viaduct Bridge in Los Angeles to name a few. The demolition process for Parker Center was broken down into several phases and is scheduled to be fully complete sometime in December 2019. Jimmy Saldivar is the Project Manager overseeing the demolition process for Silverado Contractors, Inc. “The first order of business was to salvage and remove identified artifacts that were a part of the original construction, including the monument sign and other features and items deemed historically significant,” says Saldivar. “Our next step was



SILVERADO CONTRACTORS BRINGING DOWN PARKER CENTER IN LOS ANGELES TO MAKE ROOM FOR NEW 27-STORY HIGH-RISE CITY ADMINISTRATION BUILDING



to take the 30 percent drawings given to us and work with our engineer and design firm to create a Demolition Design Plan.”

Saldivar explains that the contract called for more than just the demolition of the Parker Center building. “The plans called for the installation of new dry utility infrastructure so that critical communication lines could be relocated by others,” says Saldivar. “We had our subcontractor, Blois Construction, installing approximately 3,000 feet of the underground utility infrastructure while we began the first phase of the actual demolition process.” The first phase of the demolition was to remove all hazardous materials. This included the abatement of asbestos that was found mainly in the floor tile and pipe insulation in the interior of the building,” says Saldivar. “There was also some PCB contaminated concrete on the outside of the building around all of the windows. All of this was going on while the dry utilities were being excavated and installed.”

According to Saldivar, the next phase of the demolition process called for floor by floor demolition from the eighth floor down to the second level along the west elevation. “We ran a 10-man crew with two Link-Belt Spin Ace excavators equipped with hammer attachments and four skid steer loaders with grapple buckets to demo everything from the roof down to the second floor,” says Saldivar. “This method was used to eliminate the hazards and potential challenges associated with bringing down a building that is in close proximity to other active structures.” In this case, Silverado Contractors has been working within 10 feet of the 911 dispatch building on one side and around 25 feet from the jail on the other side. “Safety is always our number one concern, followed by controlling the noise and dust levels as much as possible,” says Saldivar. “I am pleased to say that we have not received one complaint on this project thus far and have had an excellent and productive working relationship with the City’s project management team.”

Right: Hitachi 850 high reach excavator equipped with a MT-40 processor attachment working the tower in top-down fashion.

Inset: Link-Belt 490 and Link-Belt 250 excavators processing materials.

Silverado Contractors has moved on to the final phase of the project where they brought in their larger highreach excavators to bring down the balance of the building. The structure is a poured in place concrete building with 340,000 square feet of tower that is being demoed utilizing the top-down methodology. “We are currently using our Hitachi 850 highreach with 130 feet of reach equipped with a concrete processor and our Hitachi 870 highreach unit with 70 feet of reach with a pulverizer attachment to bring down the exterior,” says Saldivar. “We will process around 45,000 tons of concrete and 3,600 gross tons of steel by the end of the job. This is a 75 percent recycle minimum project, but it looks like we will come in closer to 90 percent recyclable.”

Every demolition project comes with its challenges, and the Parker Center project was certainly no exception to the rule. “The interesting and challenging part of this project is that the building was live with some active utilities running through it during the utility rerouting and demolition process,” says Saldivar. “It was important that we did not disrupt the daily workflow of both adjacent government facilities and our crews did a great job of not only maintaining the live utilities but also keeping the noise and dust levels down as much as humanly possible. I am very proud of our crew and the outstanding job they have done on this project.” With demolition wrapping up in December 2019, construction of the new 27-story office tower will



begin sometime in 2020 with completion and grand opening by 2023.

Silverado Contractors has completed hundreds of large-scale, complex demolition projects since their inception in 2000. Their scope of work and expertise includes building demolition, selective demolition, industrial, marine, transportation, bridge removal, remediation, complete site decommissioning, plan closure, asset recovery, and recycling, as

well as excavation and site preparation. They are an industry leading union contractor providing a full spectrum of demolition and excavation services to private developers, general contractors, and industrial and public works clients throughout the West Coast. For more information on Silverado Contractors, please visit their website at www.silveradocontractors.com or call their Oakland headquarters at (510) 658-9960. **Cc**