



(952) 934-4695
www.rtlconstruction.com

Second Quarter 2016
Volume 3, Issue 1

‘Cuz you’re always in need of a lift

Are you current?

More important than needing lifts and booms to get to those high-reaching places is the need for the operators to know what they’re doing. When using a scissors lift, remember these best practices –

Stabilization – Make sure the lifts are stable and won’t tip over. Find level surfaces. Do not park the lift on uneven ground where one wheel is not on the ground.

Weather – use lifts only when weather is good. Lifts used outside are generally limited for use when wind speeds are at 28mph or less.

Positioning – Position the lift to avoid electrocution or hazards in the air. Be aware of your surroundings, and avoid positioning near vehicles that might be moving and could crash into you.

Some individuals will be contacted soon alerting them that their training needs to be updated.



The scissors lift is one of the most common pieces of equipment you’ll use. Are you current with your training? RTL will help.

The Carpenter’s Union has designated training sessions for RTL Employees. You can check the website at www.northcoun-

trycarpenters.org, or contact RTL Safety Director Steve Gilman at 612.802.7843.

News and Notes

Camping fun ...

Mark your calendars for RTL Construction’s “roughing-it” weekend, a couple days of camping on El Rancho Manana Campground.

Festivities are slated for Aug. 26-27. RTL Construction will pay for the campsites.

Interested parties should contact event coordinator Bob Hedstrom at 612-669-8741 by June 15.

El Rancho Manana is on Long Lake and features swimming, fishing, boat rental, playground, horseback riding and 25 miles of scenic walking/hiking/mountain bike trails.

Grab the opener

Fresh off its first winning season since 2010, the Minnesota Twins begin play this week with reasons to be excited. Minnesota won 83 games a season ago. While defending World Series champion Kansas City Royals look poised to continue its dominance of the American League Central Division, the Twinkies are hopeful to take another step in the right direction.

The squad finished 19-11 in its practice games but fell 3-2 to Baltimore in the season opener.

For the anglers ...

Just because Mille Lacs is strictly catch and release for Minnesota’s prized angling trophy, the wall-eye, the fishing opener for walleye, sauger and northern pike will not be cancelled. This year’s fishing opener is slated for May 14. Other important dates include the Muskie opener on June 4, large and small mouth bass in the southern part of the state on May 28.

Also, no live bait will be allowed on Mille Lacs as fisheries experts try to restore one of the upper midwest’s best fishing destinations.

Where do you get your gas?



Did you know that its typical for a job to be supplied with three different gas cans for three different applications? Each should be clearly labeled. If you find a gas can is not clearly labeled, please find your job foreman and see that

the contents are identified.

Diesel fuel will typically be stored in a yellow can. These are used in some of our scissors and forklifts. Unleaded gasoline is stored in a red can, and is also used in the scissors and forklifts. Make sure you

are completely certain that you have the right gas for the piece of equipment.

Also, a one-gallon gas container will contain unleaded gasoline with a two-cycle oil. This mixture is mostly used in our partner saws.

Putting the incorrect fuel in the wrong piece of equipment can have catastrophic results and cost a great deal of money. **DON’T HESITATE TO ASK** if there is any uncertainty.



(952) 934-4695
www.rtlconstruction.com

Second Quarter 2016
Volume 3, Issue 1

‘Four inches on your sleeves, Private Pyle, *four* inches!’

As winter turns to spring and spring to summer, exposure to the elements also requires different methods.

For safety purposes, remember to always wear long pants (no holes) and shirts with four

inch sleeves. Both are required, as are steel-toed work shoes. And remember to stay hydrated.

Here are some tips to help you stay hydrated while working in the heat – don’t wait



until you are thirsty to drink, carry a drink bottle, pre-hydrate, monitor your urine color, avoid ice cold drinks, limit caffeine intake, avoid alcohol, consume fruit, leafy greens and nuts to help replenish electrolytes.

Also, remember your sun screen and wear light-weight clothing.

Four inch sleeves and gloves are required at all times

“You don’t have to be in charge to be a leader.”

- Karl Andraschko
Instructor, UBC training

How to handle a work-related injury?

If someone is to suffer a work-related injury, proper procedure on the jobsite is a must.

If the situation is an emergency, call “911” IMMEDIATELY.

In non-emergency situations, report all injuries to the job foreman immediately. If foreman is not available, the job superintendent is next in line. If not an option, Safety Director Steve Gilman (612.802.7843) should be notified.

If the injury requires additional treatment, the injured party must

be accompanied to the nearest Minnesota Occupational Health clinic, which is posted in the gang box, and Steve Gilman should be notified.

Injured parties are required to complete a post-accident drug screen, and will not be permitted to work until the results are received by the RTL office and found favorable. Also, all clinical documentation must be submitted to the RTL office indicating whether or not the injured is cleared to return to work.



RTL angler lands trophy

An unidentified RTL employee shows off a pretty darn nice walleye taken from the ice this winter at an undisclosed northern Minnesota lake. The fish measured 25” when caught, but two days later measured 27.5” according to a co-worker who’d heard as much from the pictured angler. As the publication date of the RTL newsletter grew closer the fish had also grown to 33”, according to yet another source. By June it’s expected that the fish will have grown to 35”, or just short of the state record of 35.8” taken at the Seagull River. That fish weighed 17lbs, 8 ounces, just an ounce heavier than the trophy landed by this angler.

AL Central (2015 final standings)

Team	W-L	GB
*Kansas City	95-67	--
Minnesota	83-79	12
Cleveland	81-80	13.5
Chicago White Sox	76-86	19
Detroit	74-87	20.5

* - Denotes World Series champion.

Recent scores

Baltimore 3, Minnesota 2



Follow RTL Construction
on the twitter machine

@RTL_Const

Busy, busy Strong start to 2016

Normally fall and winter can represent a slow down for the construction industry, but RTL Construction had a very busy start to 2016, surpassing the summer of 2015’s peak in terms of number of employees.

After a brief slowdown as we wait for job readiness, expect a strong summer and fall as the backlog is very healthy.

We hear many good things about RTL from our GC Partners, so stay proud, work hard.



(952) 934-4695
www.rtlconstruction.com

Second Quarter 2017
Volume 6, Issue 1

Containing the invisible killer

RTL will focus training on containing silica dust

Silica is a mineral found in many construction materials, such as sand, concrete, stone and mortars.

The dust created by cutting, grinding, drilling or otherwise disturbing these materials can contain crystalline silica particles.

These dust particles are very small. You cannot see them.

Inhaling small silica particles causes diseases like silicosis, an incurable lung disease that can

lead to disability and death. From 1968 to 2002, silicosis was recorded as the underlying or contributing cause of death on approximately 74 million U.S. death certificates; and of these deaths, 98% were males.

lead to disability and death.

Silica also causes lung cancer, COPD, and kidney disease.

The best ways to control silica exposure is to wet down the work area or use ventilation methods such as vacuums to keep the dust from becoming airborne.

RTL is currently doing air monitoring on certain processes of our everyday scope of work to find the best methods of how to control the PEL (permissible exposure level).

RTL Construction will be offering some advanced training on

Father, son get away during family get-



Last fall's family "vacation" for this unidentified RTL employee resulted in a pair of 200lb boars taken on a wild game hunt in Florida. The nine-year old took his animal with a single shot to the head from about 60 yards, while Dad took his from 100 yards. It took two shots. "It was running," said Dad. They were using an adjustable stock AR 223.



Make sure you check for gas

Did you know that its typical for a job to be supplied with three different gas cans for three different applications?

Diesel fuel will typically be stored in a yellow can. These are used in some of our scissors and forklifts. Unleaded gasoline

is stored in a red can, and is also used in the scissors and forklifts.

Also, a one-gallon gas container will contain unleaded gasoline with a two-cycle oil. This mixture is mostly used in our partner saws.

Uncertain? Ask. Failure can



Stay safe. Stay busy.

Much like a credit score, a contractor's MOD rating is a formula that computes the number of OSHA recordables in a given period of time and directly affects a company's insurance premium.

Having a MOD rating of 1.0 is average, anything below 1.0 is good, meaning estimators can take advantage of those insurance savings bidding jobs, meaning more work for your company.

Into 2017 RTL's MOD rating had dropped below 1.0, but we've had a rash of incidents already this year, meaning focus on job-site safety has to be at a premium to help us retain a competitive advantage.

Protect yourself and your co-workers, for yourself first, but also to ensure that RTL's reputation remains such that contractors don't hesitate to reward us their work.

Remember to report any work place injuries to your foreman

News and Notes

Get your numbers

The Minnesota DNR will hold an auction of confiscated hunting and fishing equipment on Saturday, April 29 beginning at 9 a.m. The public auction will be held at Hiller Auction Service, 10785 261st Avenue, Zimmerman, MN.

Items include firearms, bows, tree stands, fishing rods and reels, traps, trail camera, spotlights, scopes and spears. Inspection of items will be Friday, April 28 from 1 to 4 p.m. and at 7 a.m. on the day of the auction.

Revenue will go the Game and Fish Fund, the DNR's most important fund for delivering fish,

Fishing stories

Some tidbits for the May 13 fishing opener.

- Fishing contributes \$2.4 billion to the state's economy in direct retail sales and 35,500 jobs.
- Minnesota has 11,842 lakes, 5,500 which are considered fishing lakes, and over 18,000 miles of fishable rivers and streams.

- There are 162 species of fish in Minnesota waters.

- At 32 percent, Minnesota ranks second in fishing participation behind only Alaska.

Well, dam

The Hoover Dam was a truly massive undertaking during its construction from 1931 to 1936.

To put it in perspective, the 3,250,000 cubic yards of concrete used in the construction of the Hoover Dam would be enough to build a two-lane highway over the nearly 3,000 mile stretch of land between San Francisco and New York City.

Construction started in April of 1931. The average daily high temperature in June was 119* fahrenheit.



(952) 934-4695
www.rtlconstruction.com

Second Quarter 2017
Volume 6, Issue 1

Hiring. RTL wants you.

The construction season will soon be in full bloom. That means that help will be wanted. Historically our best avenue of quality help is from in-house references.

If you know someone that would be a good addition please have them stop by and fill out an application.

Remember though that applicants need to be at least 18-years-old, unlike this kid.

Help build the next generation of carpenters and finishers.



RTL COOKBOOK

Gobble this up ...

What are you going to do with that wild turkey that you take from this spring's hunt? Ponder no more, here's a better way to roast your wild turkey...

Ingredients

- 1 wild turkey, skin intact
- salt and fresh black pepper
- 4 strips smoked bacon, diced
- 1 lemon, sliced and diced
- 1/2 cup finely diced onion
- 3 cloves garlic, minced
- 1/2 cup fresh herbs
- 3 carrots, whole
- 3 celery stalks, whole
- 2 medium potatoes, cut into 4 wedges
- 1 medium onion, cut into 4 wedges
- 2 cups dry white wine or chicken broth
- large piece heavy-duty aluminum foil

Separate the skin from the body without tearing the skin. Season the turkey inside and out with salt and pepper.

Combine 1/2 teaspoon salt and 1/4 teaspoon pepper with the

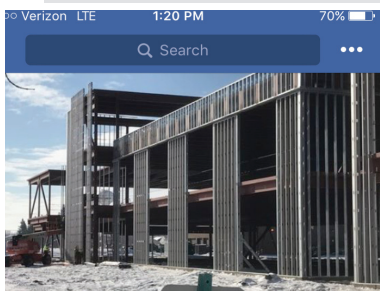
bacon, lemon, onion, garlic and herbs. Spread mixture in the area you've created between the skin and the breast.

Place turkey, breast side down, in a roasting pan. Arrange carrots, celery, potato and onion under each side of the breast to keep it from falling over. If it still won't stay up, it's no big deal. Just flip it over to the other side after about 45 minutes of cooking time.

Pour wine or broth into pan and cover pan with foil. Place into a 350 degree preheated oven

Depending on the size of your turkey, cooking time will average between 1 and 1 1/2 hours. Remove when breasts are 155 degrees. Allow to rest for 5 - 10 minutes before carving. Legs will not be tender. Remove them and use for soups and stocks.

SOCIAL MEDIA CORNER



RTL Construction, Inc
@RTLConst

Contact Us Message
Liked Following Share Save

Construction Company • Shakopee, Minnesota
Open Now

me Posts Reviews Photos Community

Write something on the Page



RTL appears
at the click of

your finger
Devices' dominance
of the modern society is
only getting better. Or
worse, depending on
your perspective.

Follow RTL Construction on the twitter machine, or check out the new Facebook page and make sure to "like" it.

Remember that your device is best used during your break time and not while you should be



Follow RTL Construction on the twitter machine @RTL_Const

Climb aboard the A-team train

The Carpenter's union in the Twin Cities also offers a number of training courses throughout the year to help its membership gain knowledge and experience.

A complete list of training opportunities can be found on the North Central States Regional

AL Central

Team	W-L	GB
Cleveland	8-7	-
Detroit	8-7	-
Chicago White Sox	7-7	.5
Kansas City	7-8	1
Minnesota	7-8	1

Recent scores
Cleveland 6, Minnesota 2

Council of Carpenters website at www.northcountrycarpenter.org. Drop down on "Training/Education" at the top of the screen for a complete list of offerings.

These classes are available in the evenings and are offered free of charge. Call the training center at 651.646.7337 to register.

RTL Construction can arrange classes specifically for RTL employees.

"Quality means doing it right when no one is looking."

- Henry Ford
Car Guy



(952) 934-4695
www.rtlconstruction.com

Second Quarter 2018
Volume 10, Issue 1

Plan your work and work your plan

Fall protection remains atop OSHA citations for 2017

RTL Construction does not stand alone in its endorsement of a “SAFETY FIRST” policy. A daily goal of maximizing production in a safe and efficient manner is hardly a revolutionary concept.

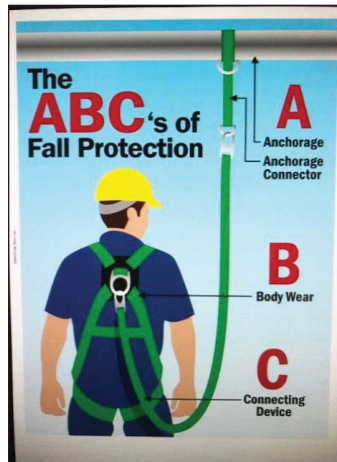
At the forefront of this movement is fall protection. RTL Construction has a zero tolerance policy on fall protection and the enforcement and implementation of OSHA guidelines. Failure to comply results in suspension until an employee completes additional fall protection training.

In 2016, 384 out of 991 (38.7%) construction fatalities were caused by falls. And yet fall protection remains #1 in citations issued by OSHA for its fiscal year 2017.

Some helpful reminders to keep out workers safe.

LEADING EDGE

A Leading Edge is an unprotected side and/or edge of a roof or floor while



under construction that can cause a fall to a lower surface. Leading Edge requires a means of protecting workers with a guardrail or personal fall arrest system. Protection from a fall is required when working above 6-feet. A

warning line can also be implemented, providing it's at least 15-feet from the edge.

EQUIPMENT

Equipment needs to be inspected prior to daily use. Three components make up the ABCs of fall protection, Anchorage, Body harness and Connector components.

RECOVERY PLAN

Because suspension trauma can set in within five minutes of a fall victim, a recovery plan to retrieve a fallen worker needs to be in place. Death can result within 30 minutes if a victim remains suspended.

REMINDERS

ALWAYS use approved anchorage points, ALWAYS make sure fall protection is sufficient for the job, ALWAYS inspect equipment prior to use, NEVER use fall protection equipment to carry materials, and ALWAYS tie off when above 6-feet.

News and Notes

Pike's peak

Anglers should pay close attention to the new northern pike fishing regulations that will be implemented for the Minnesota Fishing Opener on May 12.

The new regulations have three distinct zones to address pike populations in those areas. The new regulations are meant to restore pike populations for better harvest opportunities around the state, according to the Minnesota DNR.

The new regulations apply to inland waters throughout the state.

- North Central – limit of 10 northern pike, but not more than two longer than 26 inches. All from 22 to 26 inches must be released.

- Northeast – Two pike limit, all from 30 to 40 inches must be released, and only one over 40 inches in possession.

- South – two fish, minimum size 24 inches.

The regulations do not affect border waters and special regulations for individual lakes, rivers and streams.

Time well spent

We've made strides in time entry but there are still a number of you forgetting to enter your time EVERY DAY. Efforts in the field are what make RTL float, and you want to be compensated for those efforts.

So again, please intensify your focus on taking two minutes at the end of each day to enter your time.

The grace period is about over for those who need a reminder to enter their time.

Also, please remember to let your Superintendent and the office know if you'll be missing for whatever reason. And timely notice of days off allow us to make sure we've got ourselves covered in any situation.



RTL guy sacrifices burger for rescue

RTL Construction is in the middle of remodeling a couple of McDonalds, and the quarters are tight during the renovation. One unfortunate elderly woman was trapped by the construction congestion and a delivery truck while dining, and her attempts to navigate her car out of a tight situation were fruitless. Enter RTL carpenter Jordan Pearl, While on break, Pearl witnessed the woman's struggles, kindly set down his Bic Mac and offered to help. With some fancy maneuvering, Pearl was able to work the vehicle out of a tight situation and help the ever grateful woman on her way.

Are you on lockdown?

Baker scaffolds are very handy to use on site but can bring along some safety issues. Depending on which brand you are using they can have different styles of safety locks for the plank. If these are not used and holding the plank in place, you could have an accident. Also, as you all know, all four wheels need to be locked when you are standing on it so the scaffold can't roll.

'E' does not mean 'enough'

Make sure to be watching the fuel gauge on the equipment you are operating. If we run diesel motors out of fuel it can be a very costly procedure to get them running again, and in some cases can be a cause for future damage and costly repairs.



(952) 934-4695
www.rtlconstruction.com

Second Quarter 2018
Volume 10, Issue 1

Are your tools in your box?

RTL Construction works hard to ensure that the right tools are provided to complete jobs effectively and efficiently. Some are issued to a specific job, and others to individuals so they can perform their daily task.

Hilti On!Track has made tracking the whereabouts of this massive inventory much more manageable, but it still requires the diligence of all team members to keep track of not only the tools for the job, but also their personal tools.

If at any time you have any doubts as to what might be issued to your name, talk to your foreman/superintendent and they will be able to provide you with that information. Some people will write their tools numbers in their hardhat to a quick reference.

If something does go missing, please report it as soon as it's discovered. This will make the information timely, and make tracking it down much easier.

Also, if something gets dam-



Our tools are clearly labeled. Please keep track of the tools issued to you.

aged, whether issued to you or a job, report it immediately. Continued use can further damage a piece of equipment or tool, or even be a safety concern.

Failure to report damaged or lost tools in a timely manner could require that someone be held financially responsible for the loss, as stated in your union contract.

Help each other.



No time to rest, but reasons to recline

The Marcus Theater renovation in Waite Park is one of many jobs that has RTL busy busy busy. RTL's workforce has matched levels reached in the summer of 2017, when RTL employed the most workers in its history. More good work to come.

"Every day is a new opportunity. You can build on yesterday's success or put its failures behind and start over again. That's the way life is, with a new game every day, and that's the way baseball is."

- Bob Feller

- Pitcher - Cleveland Indians (1936-41, 45-56)
- Gun Captain - U.S. Navy (1941-45)

RTL COOKBOOK

My goodness! Flanked with flavor.

While you might not be in need of energy from your sofa while watching the back nine of the Masters, be sure to preserve enough energy to be able to reach across your body for this tasty Sunday treat.

Marinate and chill 1 ¼ lb flank steak for minimum 30 minutes in ½ small sweet onion, 3 cloves garlic, ¼ cup olive oil, 2 tbsp chopped fresh basil, 1 tbsp fresh thyme, 1 tbsp fresh rosemary, 1 tsp salt, ½ tsp crushed red pepper, ½ lemon. Grill at 400* to 450*, covered, for 9 minutes per side, or until desired doneness. Remove from grill, squeeze juice from lemon over steak, set aside and cut across the grain into strips.

And then you'll need -
2 large sweet onions
4 tablespoons olive oil, divided
½ teaspoon salt
½ teaspoon freshly ground pepper

3 red bell peppers
6 (2 or 3 oz) ciabatta or deli rolls, split

5 ounces soft ripened blue cheese

1 12 cups loosely packed arugula

Herb-marinated flank steak
6 tablespoons mayonnaise

Preheat grill to 400* to 450*.
Cut onion into 1/4 " slices. Brush with 1 tbsp olive oil and sprinkle with ¼ tsp salt and pepper. Cut

bell peppers into 1" strips, place in bowl and drizzle with 1 tbsp olive oil. Sprinkle with remaining salt and pepper and toss to coat.

Grill covered 7 to 10 minutes on each side or until lightly charred and tender.

Brush cut sides of rolls with remaining 2 tbsp olive oil and grill (uncovered) cut sides down, for 1 to 2 minutes or until lightly browned and toasted.

Spread blue cheese on cut sides of roll bottoms, top with arugula, bell pepper strips, steak and onion. Spread mayonnaise on cut sides of roll tops and place on sandwich, press lightly and TEE OFF on a flavor explosion.



Fierce fighters leave angler wounded

An unidentified RTL angler was left battered by a flurry of 14" crappie caught with a baited, bare red hook on an undisclosed western Minnesota lake. "I barely survived," said the angler, claiming to have scars to prove it. "One jumped out of the hole and attacked me. I barely survived. They tried to steal my beer."



(952) 934-4695
www.rtlconstruction.com

Second Quarter 2019
Volume 14, Issue 1

Forklifts and safety go hand-in-hand Users must be certified, and awareness is a must

Forklift Safety is among the most serious in all aspects of jobsite safety. When things go wrong on a forklift, the load can be heavy and do lots of damage, or the height at which the work is being done can have an effect on someone as far as 50-feet away.

When a forklift is in use there are several things that need to be done in order to operate safely. These guidelines can be found in section 1910.178 of the OSHA regulations.

FORKS LOWERED – When the operator of an industrial forklift is dismounted and within 25 feet of the truck, and the truck is still in his/her view, the load engaging means (forks) shall be fully lowered, controls neutralized, and the brakes set to prevent

movement. If none of these safety precautions can be met an operator needs to be in the seat.

EMPLOYEES UNDER FORKS – NO person shall be allowed to stand or pass under the elevated portion of any truck, whether loaded or empty.

CERTIFICATION – In order to operate any fork truck of any kind the person operating it needs to have gone through a training course for the specific unit type. If you are certified to operate a warehouse forklift you cannot operate a rough terrain forklift.

OPERATOR – The operator needs to inspect the truck prior to use each day, and the inspection documented and kept as proof in the event of an injury or OSHA shows up on your site.



Operator also needs to be wearing a seatbelt at all times during operation.



Winter leaves mark on construction

The University Lutheran Church project was one of many current RTL projects that were ground to a halt during the snowiest February on record, coupled with brutal temperatures in between snow storms. Many projects were put behind, and will require intensified efforts from RTL Construction and its sub-contractor partners to get them back on track.

Work is coming. Help wanted. Know anyone?

The construction season will soon be in full swing. That means that help will be wanted. Historically our best resource for quality help is from within the organization.

If you know someone that would be a good addition please have them fill out an application on line at rtlconstruction.com or call the office 952.934.4695 for more information.

RTL also has it's a hiring incentive program in place.

If you refer someone that becomes a long-term member of our team, a \$100 bonus will be rewarded.

Another \$200 is available after three months of continued employment, and another \$200 after six months.

Interested parties can call the RTL Office (952) 934-4695 or by applying on-line at rtlconstruction.com.

An adverse stretch of weather pushed back many of the projects that RTL will perform, but the dip will be ending soon as many of these jobs are expected to take-off full speed ahead in the weeks ahead.

News and Notes Keep that fish

Anglers on Mille Lacs Lake will be able to keep walleye during open water fishing for the first time since 2015. An improving walleye population has been protected by conservative fishing regulations in recent years, according to the DNR.

Mille Lacs anglers will be able to keep one walleye between 21 and 23 inches from Saturday, May 11, through Friday, May 31.

Similar to recent years, a night closure for the 2019 walleye fishing season will be in effect on Mille Lacs from 10 p.m. to 6 a.m. beginning Monday, May 13. The night walleye closure will remain in effect throughout the entire open-water season, which ends Nov. 30.

Time well spent

If you're looking for an opportunity to hang with some RTL team members without your tool bags, RTL is looking for individuals interested in a Trap Shooting night.

Interested individuals would gather at the RTL Shop on Wednesdays after work and take some shots using the computerized trap shooting simulator.

Frequency of the events would be determined by interest. Call Sam in the office to express your interest, 952-934-4695, or talk to your Supt for more information.

Final Four

The People's Stadium, aka US Bank Stadium, will host the final dance of the big dance, March Madness, the three week event that crowns the NCAA men's basketball champion.

The event is estimated to bring 94,000 visitors to the Twins Cities with an estimated economic impact of \$142 million.



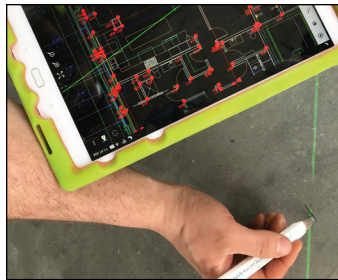
(952) 934-4695
www.rtlconstruction.com

Second Quarter 2019
Volume 14, Issue 1

Laser machine makes its mark

Laying-out walls is getting easier, and RTL is saving hours of labor by using a laser layout machine whenever possible.

Plans are down-loaded into the layout machine, which is then placed on a tri-pod on the job site.



The machine sends lines along the floor to indicate where the walls should go. Marks are made on the floor, in a similar manner to when a tape measure is used to pull numbers.

Chalk lines are then snapped onto the floor, and construction proceeds as always.



When able to be used, the machine has nearly cut the time it takes to lay out a floor by almost 50 percent.

The machine does not work in every situation, and with all technology, efforts are still being made to utilize the machine to its full capability.



Twins move forward sans Mauer

Spring brings the start of two seasons ... construction and baseball.

And even though Joe Mauer has retired, the Minnesota Twins have decided that they will field a team in 2019.

Last season the Twins finished with a record of 78-84, good for second in the AL Central.

This offseason they've added Jonathan Schoop, Nelson Cruz, CJ Cron and Marwin Gonzalez, who combined for 104 homeruns last year to an offense that ranked 6th in the AL in runs scored.

Under the new leadership of Rocco Baldelli and his forward-thinking approach they are projected to improve and potentially dethrone Cleveland as AL Central champs.

June 15th will be Joe Mauer Day and

AL Central

(2018 Final Standings)

Team	W-L	GB
Cleveland Indians	91-71	-
Minnesota Twins	78-84	13
Detroit Tigers	64-98	27
Chicago White Sox	62-100	29
Kansas City Royals	58-104	33

Recent scores

Minnesota 9, Cleveland 3

will include a celebration of his storied career as well as a number retirement ceremony at Target Field.

The squad took two of three games from defending AL Central champion Cleveland to start the season.

"We are all born ignorant, but one must work hard to remain stupid."

- Ben Franklin
- Founding Father

Add to your toolbox, today

The Carpenter's union in the Twin Cities offers a number of training courses throughout the year to help its membership gain knowledge and experience.

A complete list of training opportunities can be found on the North Central States Regional Council of Carpenters website at www.northcountrycarpenter.org.

Drop down on "Training/Education" at the top of the screen for a complete list of offerings.

These classes are available in the evenings and are offered free of charge. Call the training center at 651.646.7337 to register.

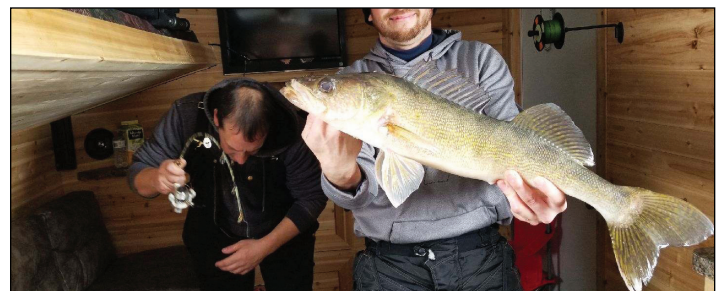
RTL Construction can arrange classes specifically for RTL employees with a minimum of six participants.

Already this year, these RTL employees are among those that have



taken advantage of additional training – Alex Hedstrom, Andrew Kuktavy, Alex Mullins, Sergio Perez, Cory Reichstadt, Brandon Schoberg, Brad Sandford, Juan Soriano, Kevin Tchida.

Drywall finishers can register for continuing education by calling the apprenticeship office (651-379-9600) or registering online www.ftium.edu.



Stuck on lake, anglers go fishing.

A pair of unidentified RTL anglers found themselves stranded 25 miles from shore at the Lake of the Woods during a memorable February blizzard. While waiting for the tow trucks, they were able to land 245 fish, including a 26" walleye (above) that looks much larger when held out way in front of your body. The Minnesota fishing opener is Saturday, May 11.

